



SYBILLA Ltd.  
Managing Environment, Safety & Risk

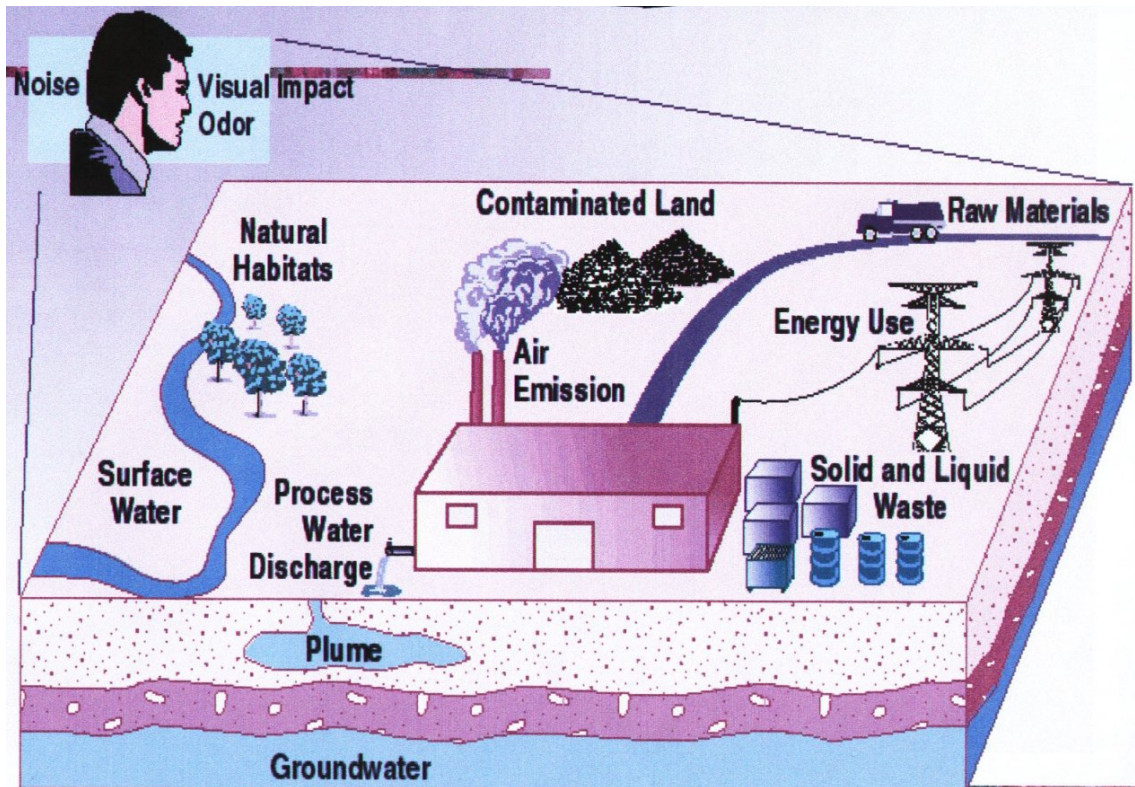
16 Ypsilandou, Maroussi GR 151 22 Athens, Greece  
Tel +30210-8024244 / Fax +30210-6141245  
e-mail : [mail@svbilla.gr](mailto:mail@svbilla.gr)

VAT No. EL 095487874



## CAPABILITY STATEMENT

### PARTICIPATION IN ENVIRONMENTAL IMPACT ASSESSMENT STUDIES FOR TRANSPORTATION PROJECTS



SEPTEMBER 2020



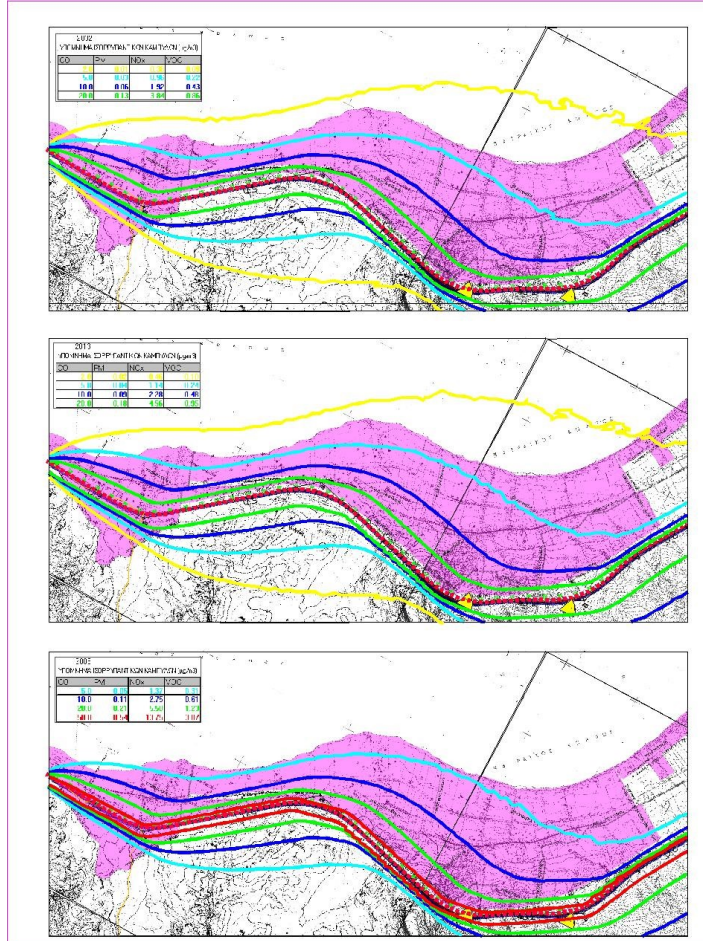
**SYBILLA Ltd.**  
*Managing Environment, Safety & Risk*

16 Ypsilandou, Maroussi GR 151 22 Athens, Greece  
Tel +30210-8024244 / Fax +30210-6141245  
e-mail : [mail@svbilla.gr](mailto:mail@svbilla.gr)

VAT No. EL 095487874



## **"Patras bypass Road" ENVIRONMENTAL IMPACT ASSESSMENT SCOPING-STUDY and Study**



<b>CONTRACTING ENTITY</b>	<b>YPEHODE/EYDE/OAP</b>
<b>CONTRACT PRICE</b>	<b>CONFIDENTIAL</b>
<b>YEAR</b>	<b>2004-2006</b>
<b>PROJECT TYPE</b>	<b>ENVIRONMENTAL IMPACT ASSESSMENT SCOPING-STUDY</b>
<b>LOCATION</b>	<b>ATHENS-PELOPONESSOS</b>



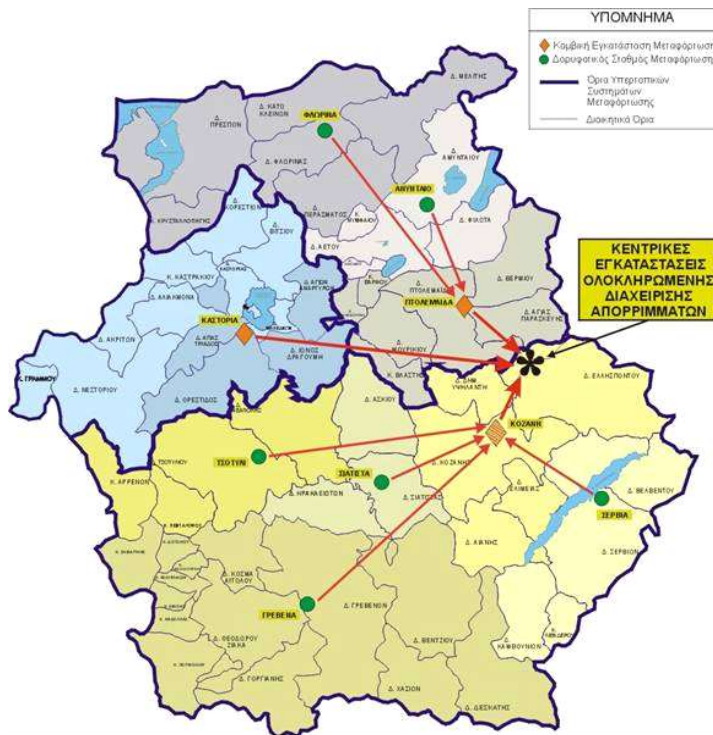
**SYBILLA Ltd.**  
*Managing Environment, Safety & Risk*

16 Ypsilandou, Maroussi GR 151 22 Athens, Greece  
 Tel +30210-8024244 / Fax +30210-6141245  
 e-mail : [mail@svbilla.gr](mailto:mail@svbilla.gr)

VAT No. EL 095487874



**STRATEGIC ENVIRONMENTAL IMPACT ASSESSMENT STUDY PLAN 2007-2013 FOR THE WESTERN MACEDONIA REGION**



<b>CONTRACTING ENTITY</b>	<b>WESTERN MACEDONIA REGION</b>
<b>CONTRACT PRICE</b>	<b>CONFIDENTIAL</b>
<b>YEAR</b>	<b>2006-2007</b>
<b>PROJECT TYPE</b>	<b>STRATEGIC ENVIRONMENTAL IMPACT ASSESSMENT STUDY PLAN 2007-2013</b>
<b>LOCATION</b>	<b>ATHENS – KOZANI</b>





**SYBILLA Ltd.**  
*Managing Environment, Safety & Risk*

16 Ypsilandou, Maroussi GR 151 22 Athens, Greece  
Tel +30210-8024244 / Fax +30210-6141245  
e-mail : [mail@svbilla.gr](mailto:mail@svbilla.gr)

VAT No. EL 095487874



***Environmental Impact Assessment Study, Government - owned Airport of Chios***



<b>CONTRACTING ENTITY</b>	<b>CIVIL AVIATION AUTHORITY</b>
<b>CONTRACT PRICE</b>	<b>CONFIDENTIAL</b>
<b>YEAR</b>	<b>2001-2002</b>
<b>PROJECT TYPE</b>	<b>ENVIRONMENTAL IMPACT ASSESSMENT STUDY</b>
<b>LOCATION</b>	<b>ATHENS – CHIOS</b>





**SYBILLA Ltd.**  
*Managing Environment, Safety & Risk*

16 Ypsilandou, Maroussi GR 151 22 Athens, Greece  
Tel +30210-8024244 / Fax +30210-6141245  
e-mail : [mail@svbilla.gr](mailto:mail@svbilla.gr)

VAT No. EL 095487874



***Alternative placement site investigation for the airport of Chios. Environmental and operational investigation.***



<b>CONTRACTING ENTITY</b>	<b>CIVIL AVIATION AUTHORITY</b>
<b>CONTRACT PRICE</b>	<b>CONFIDENTIAL</b>
<b>YEAR</b>	<b>2002</b>
<b>PROJECT TYPE</b>	<b>ALTERNATIVE PLACEMENT SITE INVESTIGATION FOR THE AIRPORT OF CHIOS. ENVIRONMENTAL AND OPERATIONAL INVESTIGATION.</b>
<b>LOCATION</b>	<b>ATHENS - CHIOS</b>



**SYBILLA Ltd.**  
*Managing Environment, Safety & Risk*

16 Ypsilandou, Maroussi GR 151 22 Athens, Greece  
Tel +30210-8024244 / Fax +30210-6141245  
e-mail : [mail@svbilla.gr](mailto:mail@svbilla.gr)

VAT No. EL 095487874



***Helicopter Pad construction and operation, INTERAMERICAN A.E. Environmental Impact Assessment Study***



<b>CONTRACTING ENTITY</b>	<b>INTERAMERICAN</b>
<b>CONTRACT PRICE</b>	<b>CONFIDENTIAL</b>
<b>YEAR</b>	<b>2001-2002</b>
<b>PROJECT TYPE</b>	<b>HELICOPTER PAD ENVIRONMENTAL IMPACT ASSESSMENT STUDY</b>
<b>LOCATION</b>	<b>ATHENS</b>



**SYBILLA Ltd.**  
*Managing Environment, Safety & Risk*

16 Ypsilandou, Maroussi GR 151 22 Athens, Greece  
Tel +30210-8024244 / Fax +30210-6141245  
e-mail : [mail@svbilla.gr](mailto:mail@svbilla.gr)

VAT No. EL 095487874



***Helicopter Pad construction and operation PIRAEUS PORT AUTHORITY.  
Environmental Impact Assessment Study***



<b>CONTRACTING ENTITY</b>	<b>PIRAEUS PORT AUTHORITY</b>
<b>CONTRACT PRICE</b>	<b>CONFIDENTIAL</b>
<b>YEAR</b>	<b>2003</b>
<b>PROJECT TYPE</b>	<b>HELICOPTER PAD ENVIRONMENTAL IMPACT ASSESSMENT STUDY</b>
<b>LOCATION</b>	<b>ATHENS</b>





**SYBILLA Ltd.**  
*Managing Environment, Safety & Risk*

16 Ypsilandou, Maroussi GR 151 22 Athens, Greece  
Tel +30210-8024244 / Fax +30210-6141245  
e-mail : [mail@svbilla.gr](mailto:mail@svbilla.gr)

VAT No. EL 095487874



***Pressurized Natural Gas Station (CNGII) in Anthousa, Attica. Environmental Impact Study***



<b>CONTRACTING ENTITY</b>	<b>DEPA</b>
<b>CONTRACT PRICE</b>	<b>CONFIDENTIAL</b>
<b>YEAR</b>	<b>2003</b>
<b>PROJECT TYPE</b>	<b>ENVIRONMENTAL IMPACT STUDY</b>
<b>LOCATION</b>	<b>ATHENS</b>



**SYBILLA Ltd.**  
*Managing Environment, Safety & Risk*

16 Ypsilandou, Maroussi GR 151 22 Athens, Greece  
Tel +30210-8024244 / Fax +30210-6141245  
e-mail : [mail@svbilla.gr](mailto:mail@svbilla.gr)

VAT No. EL 095487874



***Environmental Impact Assessment Study «New depot for electric busses in ROUF (Elaionas) area, Attica»***



<b>CONTRACTING ENTITY</b>	<b>ILPAP A.E</b>
<b>CONTRACT PRICE</b>	<b>CONFIDENTIAL</b>
<b>YEAR</b>	<b>2003</b>
<b>PROJECT TYPE</b>	<b>ENVIRONMENTAL IMPACT STUDY</b>
<b>LOCATION</b>	<b>ATHENS</b>



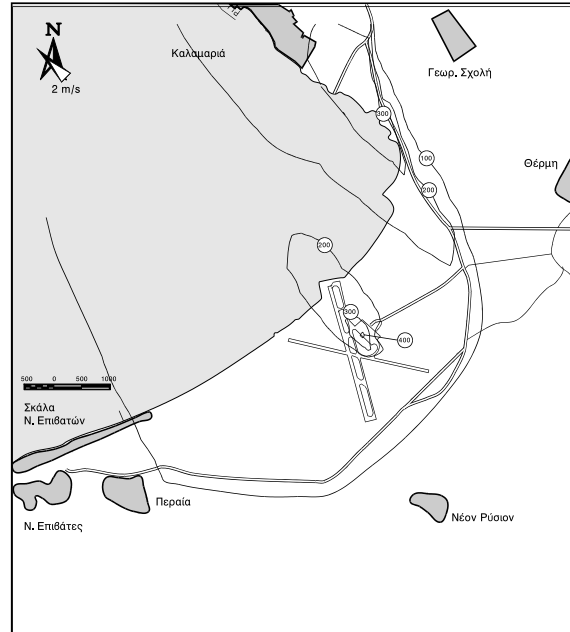
**SYBILLA Ltd.**  
*Managing Environment, Safety & Risk*

16 Ypsilandou, Maroussi GR 151 22 Athens, Greece  
Tel +30210-8024244 / Fax +30210-6141245  
e-mail : [mail@svbilla.gr](mailto:mail@svbilla.gr)

VAT No. EL 095487874



## **Government – owned Airport of Thessaloniki. Environmental Impact Assessment Study (A1)**



ΑΠΟΤΕΛΕΣΜΑΤΑ ΡΕΥΣΤΟΔΥΝΑΜΙΚΟΥ ΜΟΝΤΕΛΟΥ  
ΙΣΟΣΥΓΚΕΝΤΡΩΤΙΚΗΣ ΚΑΜΠΥΛΕΣ (μg/m<sup>3</sup>)  
ΣΕΝΑΡΙΟ ΜΕ ΕΡΓΑ  
ΕΤΟΣ : 1997  
ΡΥΠΟΣ : CO

<b>CONTRACTING ENTITY</b>	<b>CIVIL AVIATION AUTHORITY</b>
<b>CONTRACT PRICE</b>	<b>CONFIDENTIAL</b>
<b>YEAR</b>	<b>1992</b>
<b>PROJECT TYPE</b>	<b>ENVIRONMENTAL IMPACT ASSESSMENT STUDY</b>
<b>LOCATION</b>	<b>ATHENS – THESSALONIKI - LEMNOS</b>





**SYBILLA Ltd.**  
*Managing Environment, Safety & Risk*

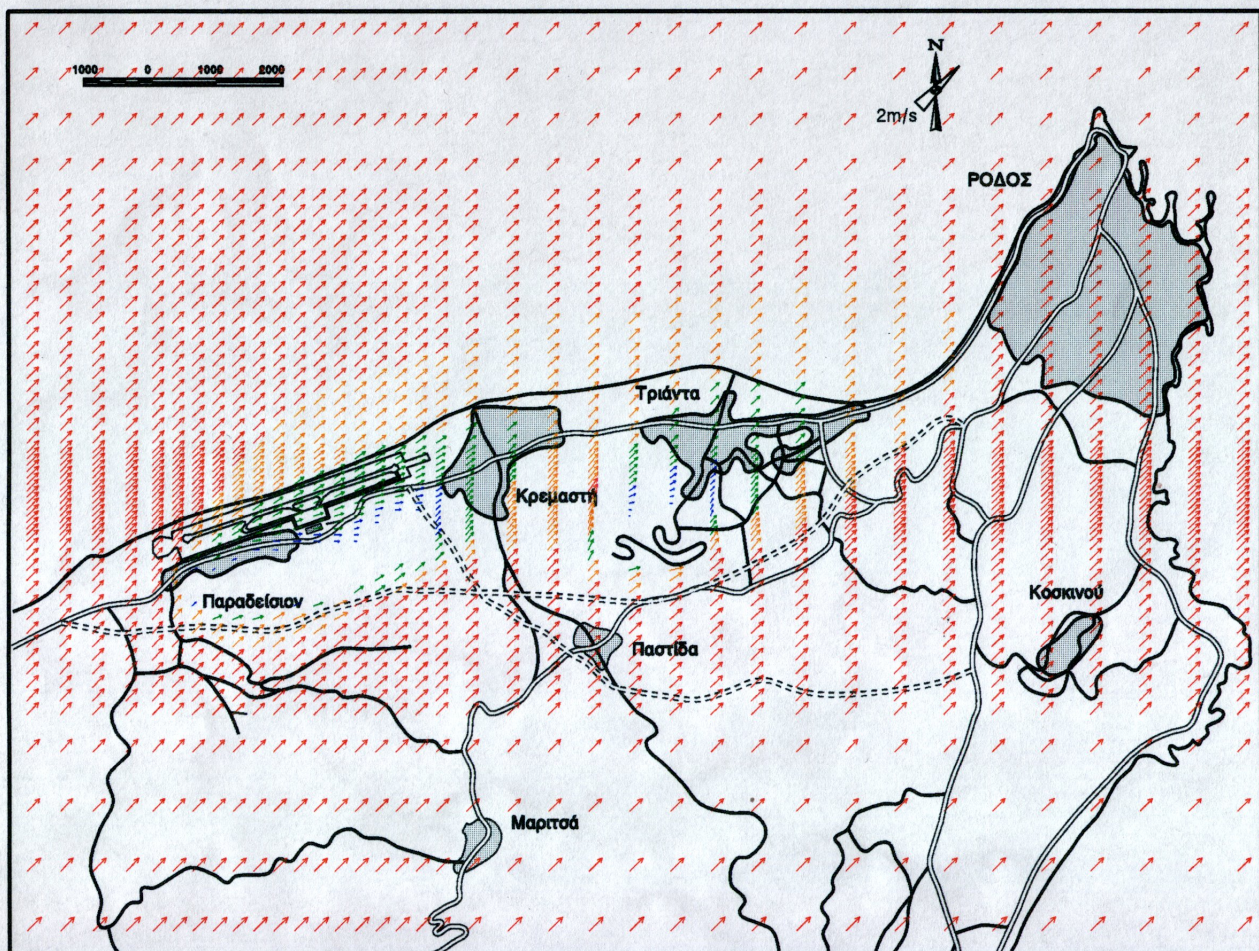
16 Ypsilandou, Maroussi GR 151 22 Athens, Greece  
 Tel +30210-8024244 / Fax +30210-6141245  
 e-mail : [mail@svbilla.gr](mailto:mail@svbilla.gr)

VAT No. EL 095487874



CERTIFIED M.S.  
 ISO 9001:2015  
 ISO 14001:2015

**Government – owned Airports of Rhodes, Kos, Mykonos. Environmental Impact Assessment Study (A1)**



<b>CONTRACTING ENTITY</b>	<b>CIVIL AVIATION AUTHORITY</b>
<b>CONTRACT PRICE</b>	<b>CONFIDENTIAL</b>
<b>YEAR</b>	<b>1992</b>
<b>PROJECT TYPE</b>	<b>ENVIRONMENTAL IMPACT ASSESSMENT STUDY</b>
<b>LOCATION</b>	<b>ATHENS – RHODES – KOS – MYKONOS</b>



**SYBILLA Ltd.**  
*Managing Environment, Safety & Risk*

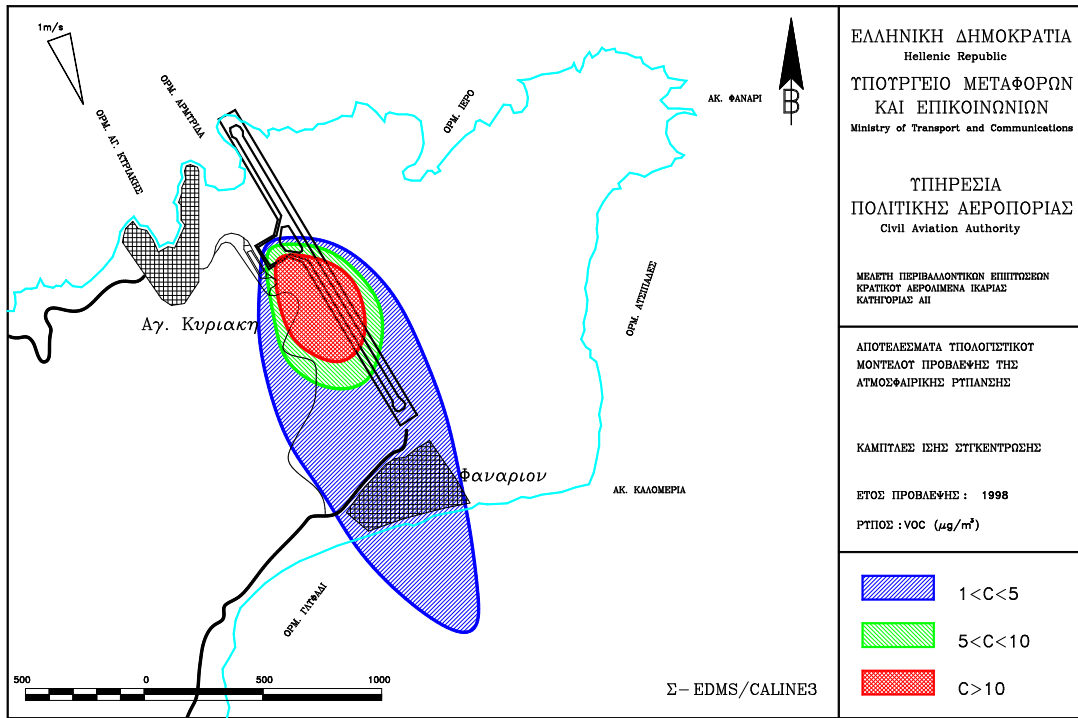
16 Ypsilandou, Maroussi GR 151 22 Athens, Greece  
 Tel +30210-8024244 / Fax +30210-6141245  
 e-mail : [mail@svbilla.gr](mailto:mail@svbilla.gr)

VAT No. EL 095487874



CERTIFIED M.S.  
 ISO 9001:2015  
 ISO 14001:2015

## Government – owned Airport of Ikaria. Environmental Impact Assessment Study (A1)



<b>CONTRACTING ENTITY</b>	<b>CIVIL AVIATION AUTHORITY</b>
<b>CONTRACT PRICE</b>	<b>CONFIDENTIAL</b>
<b>YEAR</b>	<b>1995</b>
<b>PROJECT TYPE</b>	<b>ENVIRONMENTAL IMPACT ASSESSMENT STUDY</b>
<b>LOCATION</b>	<b>ATHENS – IKARIA</b>



SYBILLA Ltd.  
Managing Environment, Safety & Risk

16 Ypsilandou, Maroussi GR 151 22 Athens, Greece  
Tel +30210-8024244 / Fax +30210-6141245  
e-mail : [mail@svbilla.gr](mailto:mail@svbilla.gr)

VAT No. EL 095487874



## Government – owned Airport of Zakynthos. Environmental Impact Assessment Study (A1)



ΚΑΜΠΙΤΑΕΣ ΊΣΗΣ ΣΥΓΚΕΝΤΡΩΣΗΣ  
ΧΡΟΝΙΚΟΣ ΟΡΙΖΟΝΤΑΣ 2010  
ΡΥΠΟΣ NO<sub>x</sub> ( $\mu\text{g}/\text{m}^3$ )

500 0 500 1000

<b>CONTRACTING ENTITY</b>	<b>CIVIL AVIATION AUTHORITY</b>
<b>CONTRACT PRICE</b>	<b>CONFIDENTIAL</b>
<b>YEAR</b>	<b>1995</b>
<b>PROJECT TYPE</b>	<b>ENVIRONMENTAL IMPACT ASSESSMENT STUDY</b>
<b>LOCATION</b>	<b>ATHENS – ZAKINTHOS</b>





**SYBILLA Ltd.**  
*Managing Environment, Safety & Risk*

16 Ypsilandou, Maroussi GR 151 22 Athens, Greece  
Tel +30210-8024244 / Fax +30210-6141245  
e-mail : [mail@svbilla.gr](mailto:mail@svbilla.gr)

VAT No. EL 095487874



***Government – owned Airport of Kavala. Environmental Impact Assessment Study (A1)***



<b>CONTRACTING ENTITY</b>	<b>CIVIL AVIATION AUTHORITY</b>
<b>CONTRACT PRICE</b>	<b>CONFIDENTIAL</b>
<b>YEAR</b>	<b>1995</b>
<b>PROJECT TYPE</b>	<b>ENVIRONMENTAL IMPACT ASSESSMENT STUDY</b>
<b>LOCATION</b>	<b>ATHENS – KAVALA</b>



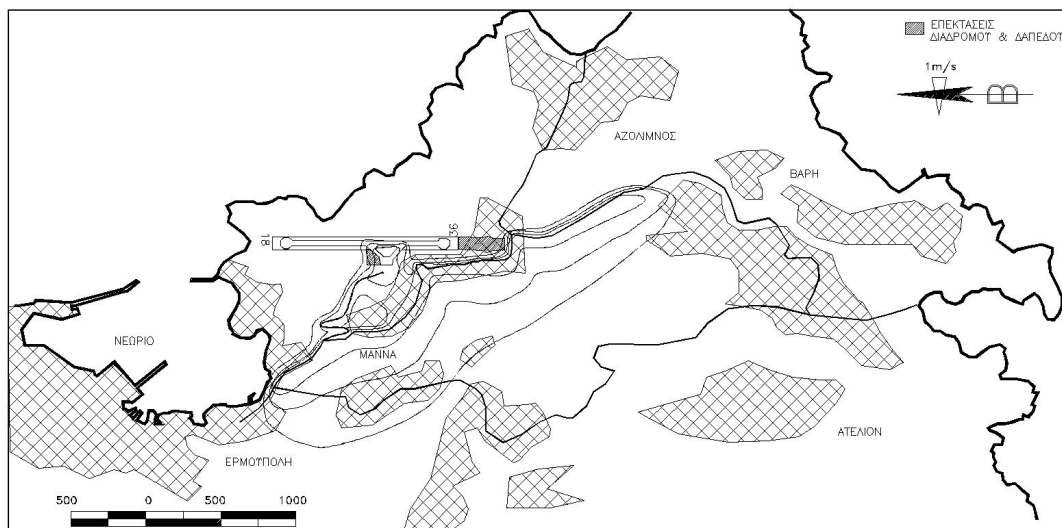
SYBILLA Ltd.  
Managing Environment, Safety & Risk

16 Ypsilandou, Maroussi GR 151 22 Athens, Greece  
Tel +30210-8024244 / Fax +30210-6141245  
e-mail : [mail@svbilla.gr](mailto:mail@svbilla.gr)

VAT No. EL 095487874



## Government – owned Airport of Syros. Environmental Impact Assessment Study (A1)



ΚΑΜΠΤΑΕΣ ΊΣΗΣ ΣΥΓΚΕΝΤΡΩΣΗΣ  
ΧΡΟΝΙΚΟΣ ΟΡΙΖΟΝΤΑΣ 1995 – ΤΠΑΡΧΟΤΣΑ ΚΑΤΑΣΤΑΣΗ  
ΡΥΠΟΣ CO

<b>CONTRACTING ENTITY</b>	<b>CIVIL AVIATION AUTHORITY</b>
<b>CONTRACT PRICE</b>	<b>CONFIDENTIAL</b>
<b>YEAR</b>	<b>1995</b>
<b>PROJECT TYPE</b>	<b>ENVIRONMENTAL IMPACT ASSESSMENT STUDY</b>
<b>LOCATION</b>	<b>ATHENS – SYROS</b>



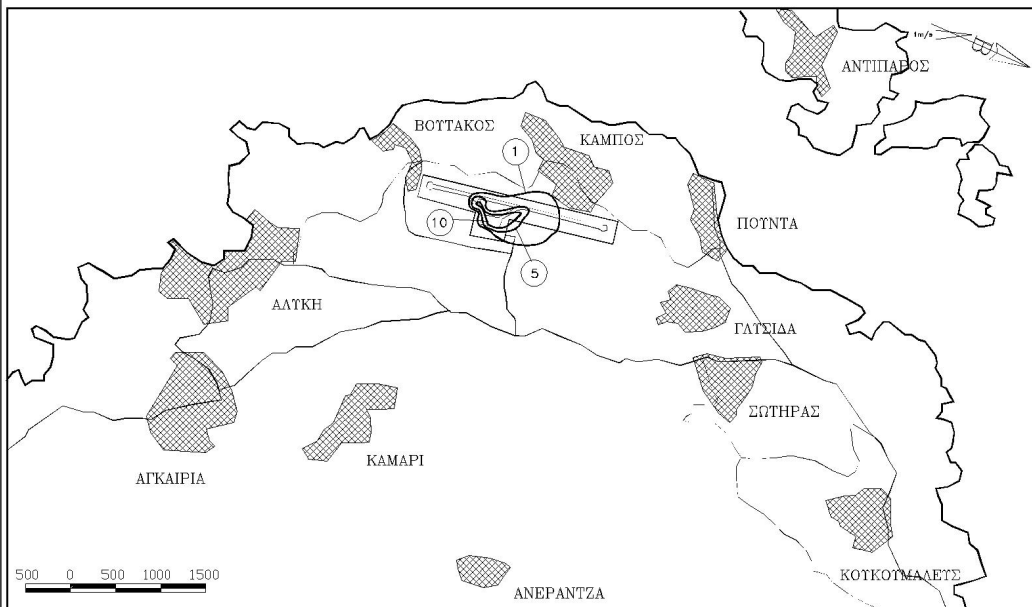
SYBILLA Ltd.  
Managing Environment, Safety & Risk

16 Ypsilandou, Maroussi GR 151 22 Athens, Greece  
Tel +30210-8024244 / Fax +30210-6141245  
e-mail : [mail@svbilla.gr](mailto:mail@svbilla.gr)

VAT No. EL 095487874



## Government – owned Airport of Paros. Environmental Impact Assessment Study (A1)



ΚΑΜΠΙΤΑΕΣ ΙΣΗΣ ΣΥΓΚΕΝΤΡΩΣΗΣ  
ΕΤΟΣ 1999  
ΡΥΠΟΣ VOC ( $\mu\text{g}/\text{m}^3$ )

<b>CONTRACTING ENTITY</b>	<b>CIVIL AVIATION AUTHORITY</b>
<b>CONTRACT PRICE</b>	<b>CONFIDENTIAL</b>
<b>YEAR</b>	<b>1995</b>
<b>PROJECT TYPE</b>	<b>ENVIRONMENTAL IMPACT ASSESSMENT STUDY</b>
<b>LOCATION</b>	<b>ATHENS – PAROS</b>





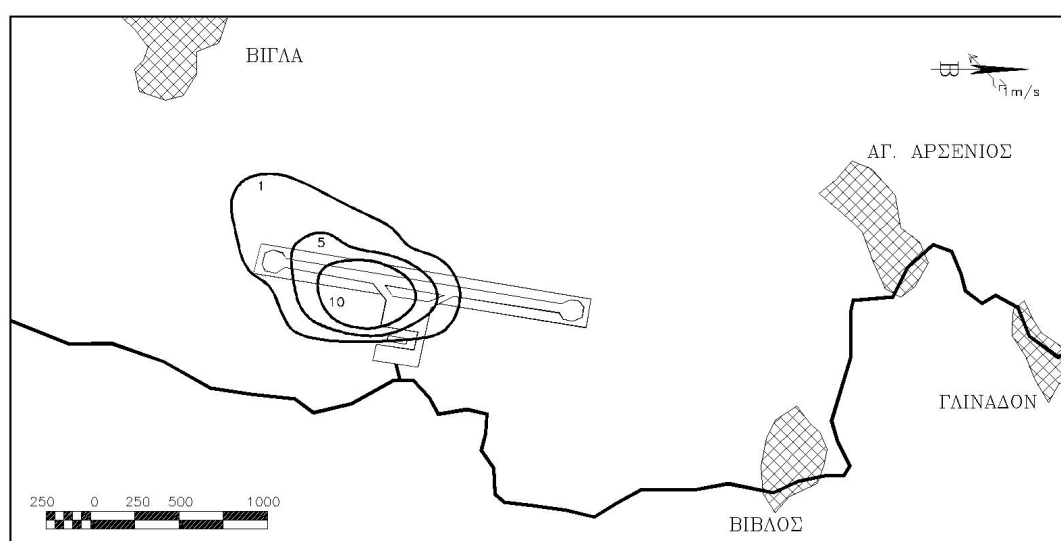
SYBILLA Ltd.  
Managing Environment, Safety & Risk

16 Ypsilandou, Maroussi GR 151 22 Athens, Greece  
Tel +30210-8024244 / Fax +30210-6141245  
e-mail : [mail@svbilla.gr](mailto:mail@svbilla.gr)

VAT No. EL 095487874



## Government – owned Airport of Naxos. Environmental Impact Assessment Study (A1)



ΑΠΟΤΕΛΕΣΜΑΤΑ ΜΟΝΤΕΛΩΝ ΠΡΟΒΛΕΨΗΣ ΑΤΜ. ΡΥΠΑΝΣΗΣ Σ- EDMS/CALINE3  
ΡΥΠΟΣ NO<sub>x</sub> (  $\mu\text{g}/\text{m}^3$  )  
ΕΤΟΣ ΠΡΟΒΛΕΨΗΣ 1997

<b>CONTRACTING ENTITY</b>	<b>CIVIL AVIATION AUTHORITY</b>
<b>CONTRACT PRICE</b>	<b>CONFIDENTIAL</b>
<b>YEAR</b>	<b>1995</b>
<b>PROJECT TYPE</b>	<b>ENVIRONMENTAL IMPACT ASSESSMENT STUDY</b>
<b>LOCATION</b>	<b>ATHENS – NAXOS</b>



**SYBILLA Ltd.**  
**Managing Environment, Safety & Risk**

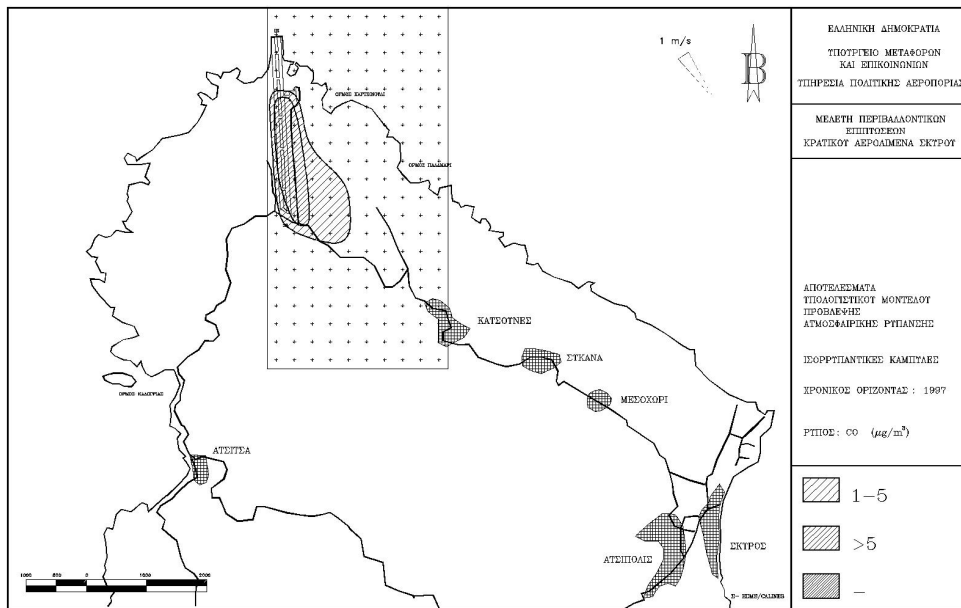
16 Ypsilandou, Maroussi GR 151 22 Athens, Greece  
 Tel +30210-8024244 / Fax +30210-6141245  
 e-mail : [mail@svbilla.gr](mailto:mail@svbilla.gr)

VAT No. EL 095487874



**TUV**  
**AUSTRIA**  
 CERTIFIED M.S.  
 ISO 9001:2015  
 ISO 14001:2015

**Government – owned Airport of Skiros. Environmental Impact Assessment Study (A1)**



ΕΛΛΗΝΙΚΗ ΔΗΜΟΚΡΑΤΙΑ  
 ΥΠΟΥΡΓΕΙΟ ΜΕΤΑΦΟΡΩΝ  
 ΚΑΙ ΕΠΙΧΩΡΟΝΟΜΙΩΝ  
 ΓΕΝΙΚΗ ΔΙΕΥΘΥΝΣΗ ΑΕΡΟΠΟΡΙΑΣ

ΜΕΛΕΤΗ ΠΕΡΙΒΑΛΛΟΝΤΙΚΩΝ  
 ΕΠΙΠΤΩΣΕΩΝ  
 ΚΡΑΤΙΚΟΥ ΑΕΡΟΔΡΟΜΙΑΣ ΕΚΤΡΟΥ

ΑΠΟΤΕΛΕΣΜΑΤΑ  
 ΠΡΟΑΓΩΓΗΤΟΥ ΜΟΝΤΕΛΟΥ  
 ΠΡΟΣΒΛΗΤΗΣ  
 ΑΤΜΟΣΦΑΙΡΙΚΗΣ ΡΥΠΑΝΣΗΣ

ΙΣΟΡΡΩΤΗΝΤΙΚΕΣ ΚΑΜΠΔΑΡΕ  
 ΧΡΟΝΙΚΟΣ ΟΡΙΖΟΝΤΑΣ : 1997

ΡΥΠΟΣ: CO (µg/m³)

1-5  
 >5  
 -

<b>CONTRACTING ENTITY</b>	<b>CIVIL AVIATION AUTHORITY</b>
<b>CONTRACT PRICE</b>	<b>CONFIDENTIAL</b>
<b>YEAR</b>	<b>1995</b>
<b>PROJECT TYPE</b>	<b>ENVIRONMENTAL IMPACT ASSESSMENT STUDY</b>
<b>LOCATION</b>	<b>ATHENS – SKIROE</b>



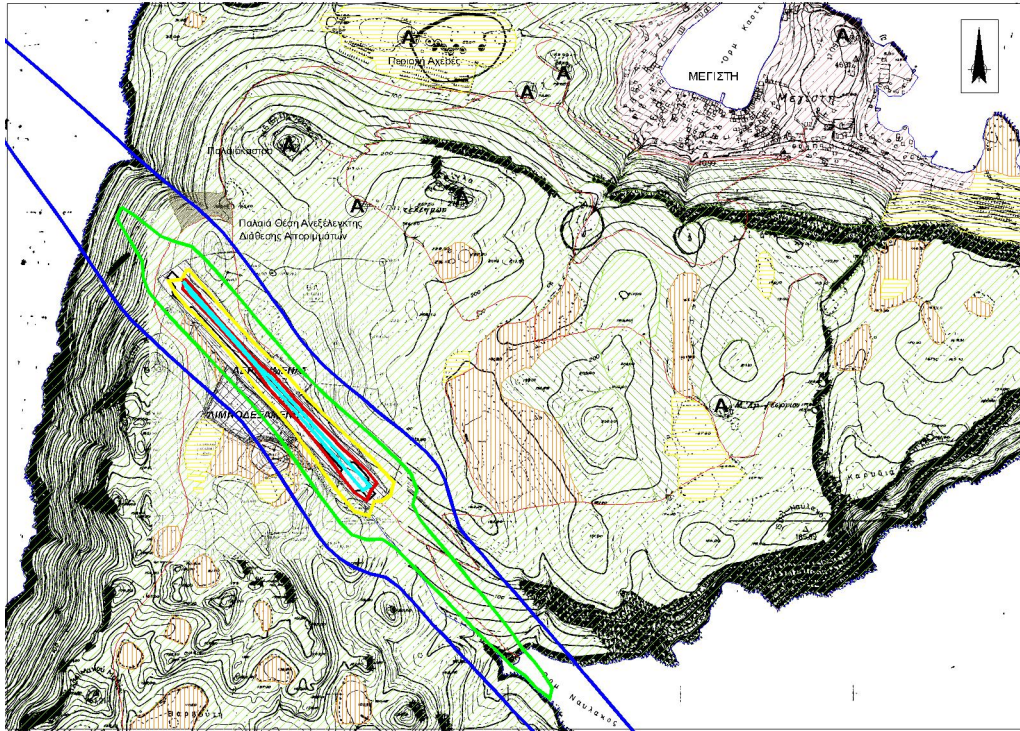
**SYBILLA Ltd.**  
*Managing Environment, Safety & Risk*

16 Ypsilandou, Maroussi GR 151 22 Athens, Greece  
Tel +30210-8024244 / Fax +30210-6141245  
e-mail : [mail@svbilla.gr](mailto:mail@svbilla.gr)

VAT No. EL 095487874



***Government – owned Airport of Kastelorizo. Environmental Impact Assessment Study***



<b>CONTRACTING ENTITY</b>	<b>CIVIL AVIATION AUTHORITY</b>
<b>CONTRACT PRICE</b>	<b>CONFIDENTIAL</b>
<b>YEAR</b>	<b>1999</b>
<b>PROJECT TYPE</b>	<b>ENVIRONMENTAL IMPACT ASSESSMENT STUDY</b>
<b>LOCATION</b>	<b>ATHENS – KASTELORIZO</b>



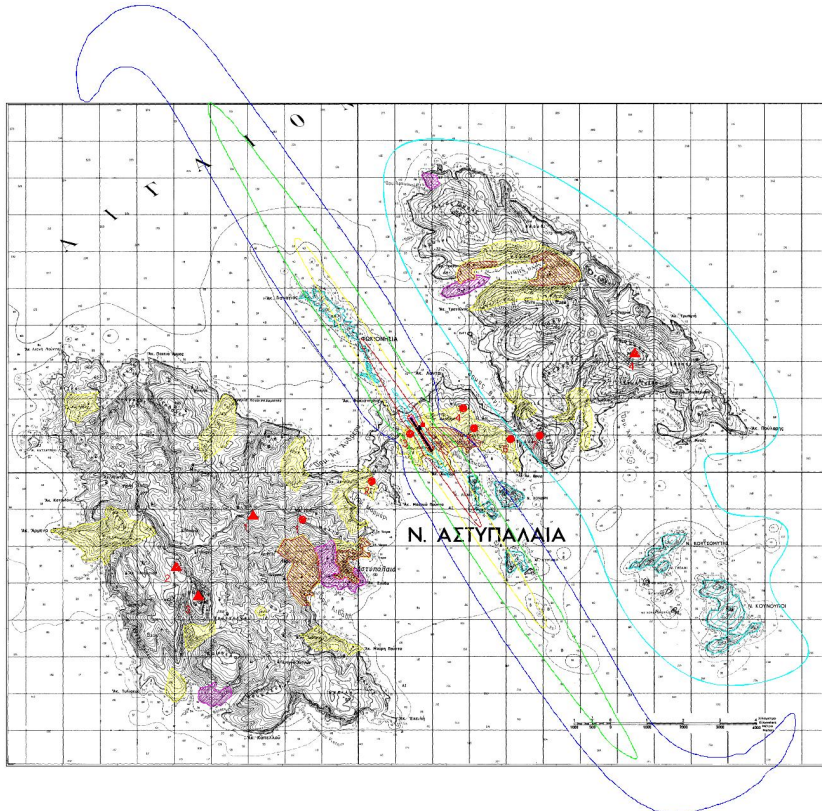
**SYBILLA Ltd.**  
*Managing Environment, Safety & Risk*

16 Ypsilandou, Maroussi GR 151 22 Athens, Greece  
Tel +30210-8024244 / Fax +30210-6141245  
e-mail : [mail@svbilla.gr](mailto:mail@svbilla.gr)

VAT No. EL 095487874



## ***Government – owned Airport of Astipalaia. Environmental Impact Assessment Study***



<b>CONTRACTING ENTITY</b>	<b>CIVIL AVIATION AUTHORITY</b>
<b>CONTRACT PRICE</b>	<b>CONFIDENTIAL</b>
<b>YEAR</b>	<b>1995</b>
<b>PROJECT TYPE</b>	<b>ENVIRONMENTAL IMPACT ASSESSMENT STUDY</b>
<b>LOCATION</b>	<b>ATHENS – ASTIPALAIA</b>





**SYBILLA Ltd.**  
*Managing Environment, Safety & Risk*

16 Ypsilandou, Maroussi GR 151 22 Athens, Greece  
Tel +30210-8024244 / Fax +30210-6141245  
e-mail : [mail@svbilla.gr](mailto:mail@svbilla.gr)

VAT No. EL 095487874



### ***Airport of Heraklion runway, Environmental Impact Assessment Study***



<b>CONTRACTING ENTITY</b>	<b>UNIVERSITY OF CRETE FOR THE CIVIL AVIATION AUHTORITY</b>
<b>CONTRACT PRICE</b>	<b>CONFIDENTIAL</b>
<b>YEAR</b>	<b>1995</b>
<b>PROJECT TYPE</b>	<b>ENVIRONMENTAL IMPACT ASSESSMENT STUDY</b>
<b>LOCATION</b>	<b>ATHENS – HERAKLION</b>



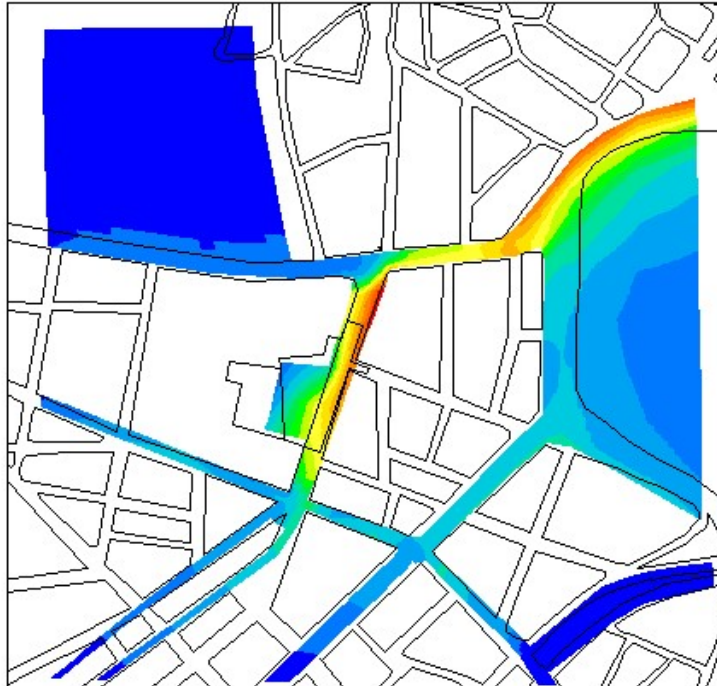
SYBILLA Ltd.  
Managing Environment, Safety & Risk

16 Ypsilandou, Maroussi GR 151 22 Athens, Greece  
Tel +30210-8024244 / Fax +30210-6141245  
e-mail : [mail@svbilla.gr](mailto:mail@svbilla.gr)

VAT No. EL 095487874



### Athens Metro Environmental Impact Assessment Study (A1)



OLYMPION STATION WORKS  
CO Concentration Contours (micro g/m3)

3D Fluid Dynamics model results, Olymion area – Athens Metro Environmental Impact Assessment Study

CONTRACTING ENTITY	ATTIKO METRO
CONTRACT PRICE	CONFIDENTIAL
YEAR	1995
PROJECT TYPE	ENVIRONMENTAL IMPACT ASSESSMENT
LOCATION	ATHENS



**SYBILLA Ltd.**  
*Managing Environment, Safety & Risk*

16 Ypsilandou, Maroussi GR 151 22 Athens, Greece  
Tel +30210-8024244 / Fax +30210-6141245  
e-mail : [mail@svbilla.gr](mailto:mail@svbilla.gr)

VAT No. EL 095487874



### ***Athens Metro Line Extension, Environmental Impact Assessment Study***



<b>CONTRACTING ENTITY</b>	<b>ATTIKO METRO</b>
<b>CONTRACT PRICE</b>	<b>CONFIDENTIAL</b>
<b>YEAR</b>	<b>1994</b>
<b>PROJECT TYPE</b>	<b>ENVIRONMENTAL IMPACT ASSESSMENT STUDY</b>
<b>LOCATION</b>	<b>ATHENS</b>



SYBILLA Ltd.  
Managing Environment, Safety & Risk

16 Ypsilandou, Maroussi GR 151 22 Athens, Greece  
Tel +30210-8024244 / Fax +30210-6141245  
e-mail : [mail@svbilla.gr](mailto:mail@svbilla.gr)

VAT No. EL 095487874



***ATHENS METRO – LINE 2 – SEPOLIA DAFNE and KERAMIKOS – Environmental Impact Assessment Study – Construction and Operation of underground works***



<b>CONTRACTING ENTITY</b>	<b>ΑΤΤΙΚΟ ΜΕΤΡΟ</b>
<b>CONTRACT PRICE</b>	<b>CONFIDENTIAL</b>
<b>YEAR</b>	<b>1994</b>
<b>PROJECT TYPE</b>	<b>ENVIRONMENTAL IMPACT ASSESSMENT STUDY</b>
<b>LOCATION</b>	<b>ATHENS</b>





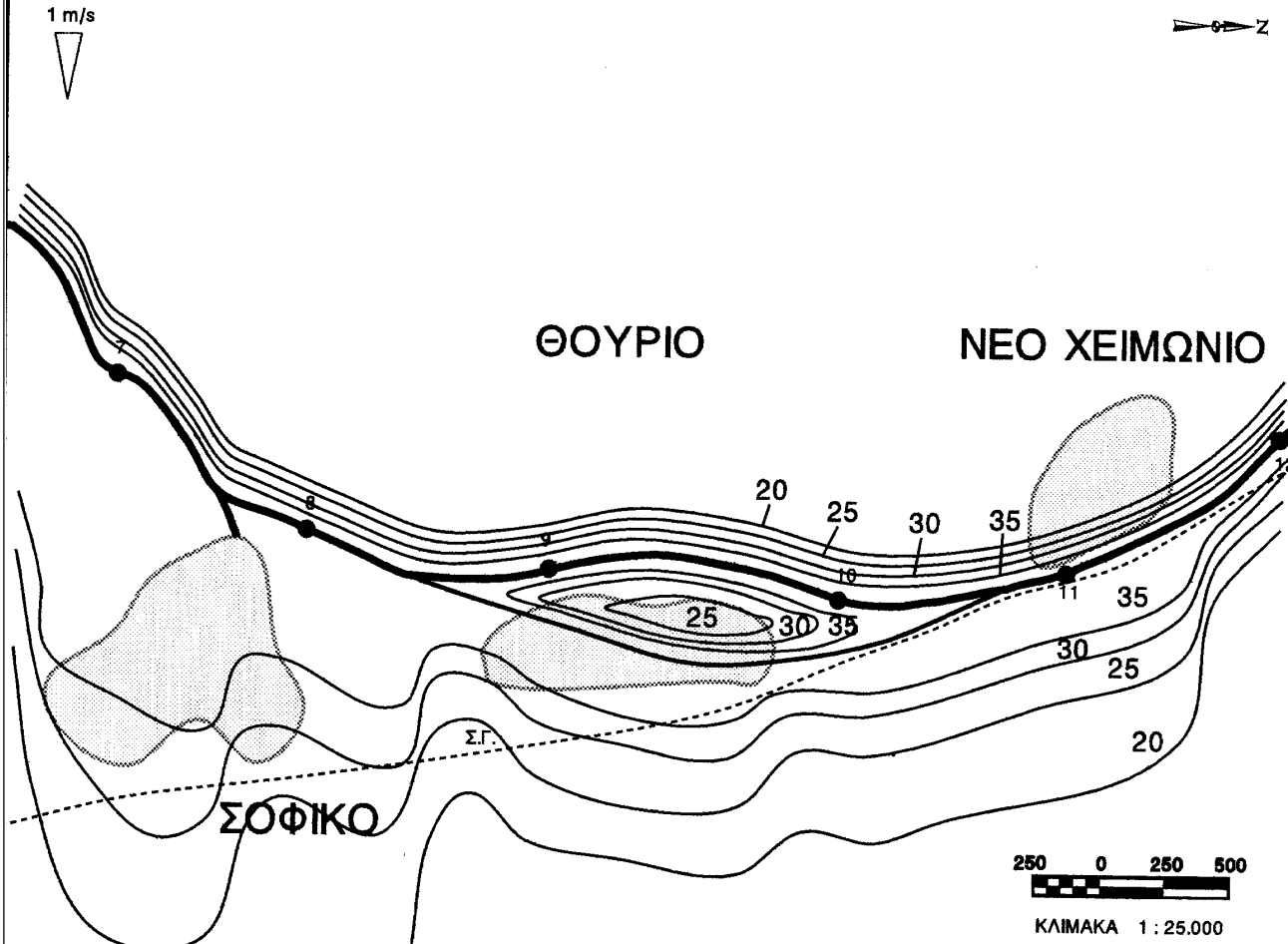
SYBILLA Ltd.  
Managing Environment, Safety & Risk

16 Ypsilandou, Maroussi GR 151 22 Athens, Greece  
Tel +30210-8024244 / Fax +30210-6141245  
e-mail : [mail@svbilla.gr](mailto:mail@svbilla.gr)

VAT No. EL 095487874



## New Road network - Soufli bypass, Environmental Impact Assessment Study



CONTRACTING ENTITY	ΥΡΕΗΟΔΕ
CONTRACT PRICE	CONFIDENTIAL
YEAR	1995
PROJECT TYPE	ENVIRONMENTAL IMPACT ASSESSMENT STUDY
LOCATION	ATHENS - MACEDONIA



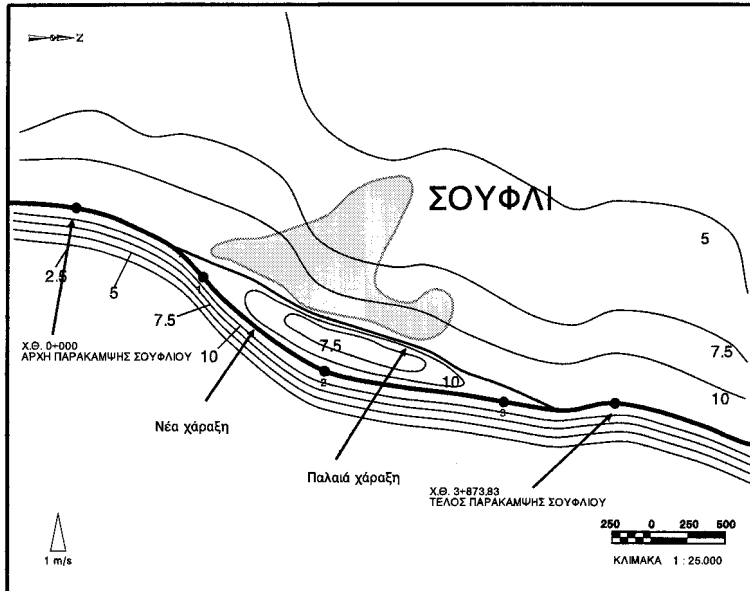
SYBILLA Ltd.  
Managing Environment, Safety & Risk

16 Ypsilandou, Maroussi GR 151 22 Athens, Greece  
Tel +30210-8024244 / Fax +30210-6141245  
e-mail : [mail@svbilla.gr](mailto:mail@svbilla.gr)

VAT No. EL 095487874



## New Road network Ferres – Kastanies, Environmental Impact Assessment Study



ΕΡΓΟ : ΠΑΡΑΚΑΜΨΗ ΣΟΥΦΛΙΟΥ  
ΘΕΜΑ : ΙΣΟΣΥΓΚΕΝΤΡΩΣΙΑΚΕΣ ΚΑΜΠΥΛΕΣ  
NOx (µg/m<sup>3</sup>)  
ΣΕΝΑΡΙΟ : 1995 "ΜΕ" ΕΡΓΑ

CONTRACTING ENTITY	ΥΡΕΗΟΔΕ
CONTRACT PRICE	CONFIDENTIAL
YEAR	1995
PROJECT TYPE	ENVIRONMENTAL IMPACT ASSESSMENT STUDY
LOCATION	ATHENS - MACEDONIA



**SYBILLA Ltd.**  
*Managing Environment, Safety & Risk*

16 Ypsilandou, Maroussi GR 151 22 Athens, Greece  
Tel +30210-8024244 / Fax +30210-6141245  
e-mail : [mail@svbilla.gr](mailto:mail@svbilla.gr)

VAT No. EL 095487874



***New Roads, extension and support buildings, Preveza – Aktio junction.  
Environmental Impact Assessment Study***



<b>CONTRACTING ENTITY</b>	<b>YPEHODE</b>
<b>CONTRACT PRICE</b>	<b>CONFIDENTIAL</b>
<b>YEAR</b>	<b>1995</b>
<b>PROJECT TYPE</b>	<b>ENVIRONMENTAL IMPACT ASSESSMENT STUDY</b>
<b>LOCATION</b>	<b>ATHENS - PREVEZA</b>



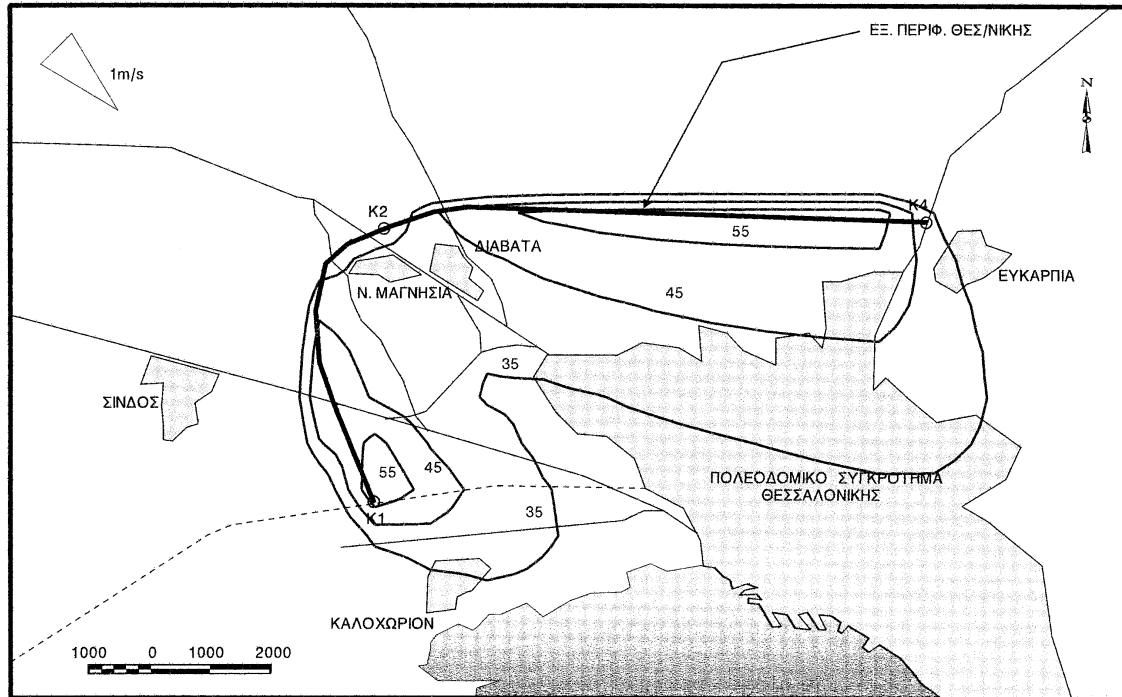
SYBILLA Ltd.  
Managing Environment, Safety & Risk

16 Ypsilandou, Maroussi GR 151 22 Athens, Greece  
Tel +30210-8024244 / Fax +30210-6141245  
e-mail : [mail@svbilla.gr](mailto:mail@svbilla.gr)

VAT No. EL 095487874



## Western Thessaloniki bypass road, Environmental Impact Assessment Study



ΙΣΟΣΥΓΚΕΝΤΡΩΤΙΚΕΣ ΚΑΜΠΥΛΕΣ (µg/m<sup>3</sup>) ΤΟΥ ΡΥΠΟΥ NO<sub>x</sub>  
ΕΤΟΣ 2011. ΕΞΩΤΕΡΙΚΗ ΠΕΡΙΦΕΡΕΙΑΚΗ ΘΕΣΣΑΛΟΝΙΚΗΣ

CONTRACTING ENTITY	ΥΡΕΦΟΔΕ
CONTRACT PRICE	CONFIDENTIAL
YEAR	1994
PROJECT TYPE	ENVIRONMENTAL IMPACT ASSESSMENT STUDY
LOCATION	ATHENS - THESSALONIKI





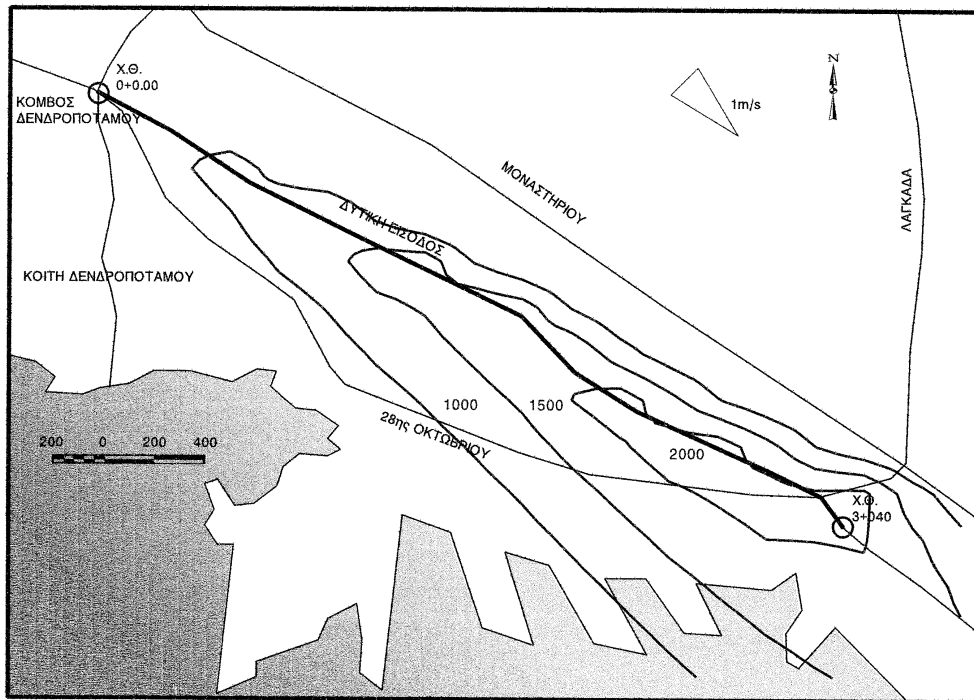
SYBILLA Ltd.  
Managing Environment, Safety & Risk

16 Ypsilandou, Maroussi GR 151 22 Athens, Greece  
Tel +30210-8024244 / Fax +30210-6141245  
e-mail : [mail@svbilla.gr](mailto:mail@svbilla.gr)

VAT No. EL 095487874



## Thessaloniki West Entrance, Environmental Impact Assessment Study



ΙΣΟΣΥΓΚΕΝΤΡΩΤΙΚΕΣ ΚΑΜΠΥΛΕΣ (µg/m<sup>3</sup>) ΤΟΥ ΡΥΠΟΥ CO  
ΕΤΟΣ 1997. ΔΥΤΙΚΗ ΕΙΣΟΔΟΣ ΘΕΣΣΑΛΟΝΙΚΗΣ

CONTRACTING ENTITY	ΥΡΕΦΟΔΕ
CONTRACT PRICE	CONFIDENTIAL
YEAR	1994
PROJECT TYPE	ENVIRONMENTAL IMPACT ASSESSMENT STUDY
LOCATION	ATHENS - THESSALONIKI



**SYBILLA Ltd.**  
*Managing Environment, Safety & Risk*

16 Ypsilandou, Maroussi GR 151 22 Athens, Greece  
 Tel +30210-8024244 / Fax +30210-6141245  
 e-mail : [mail@svbilla.gr](mailto:mail@svbilla.gr)

VAT No. EL 095487874



## ***Thessaloniki pass-through road, Environmental Impact Assessment Study***



<b>CONTRACTING ENTITY</b>	<b>YPEHODE</b>
<b>CONTRACT PRICE</b>	<b>CONFIDENTIAL</b>
<b>YEAR</b>	<b>1995</b>
<b>PROJECT TYPE</b>	<b>ENVIRONMENTAL IMPACT ASSESSMENT STUDY</b>
<b>LOCATION</b>	<b>ATHENS - THESSALONIKI</b>



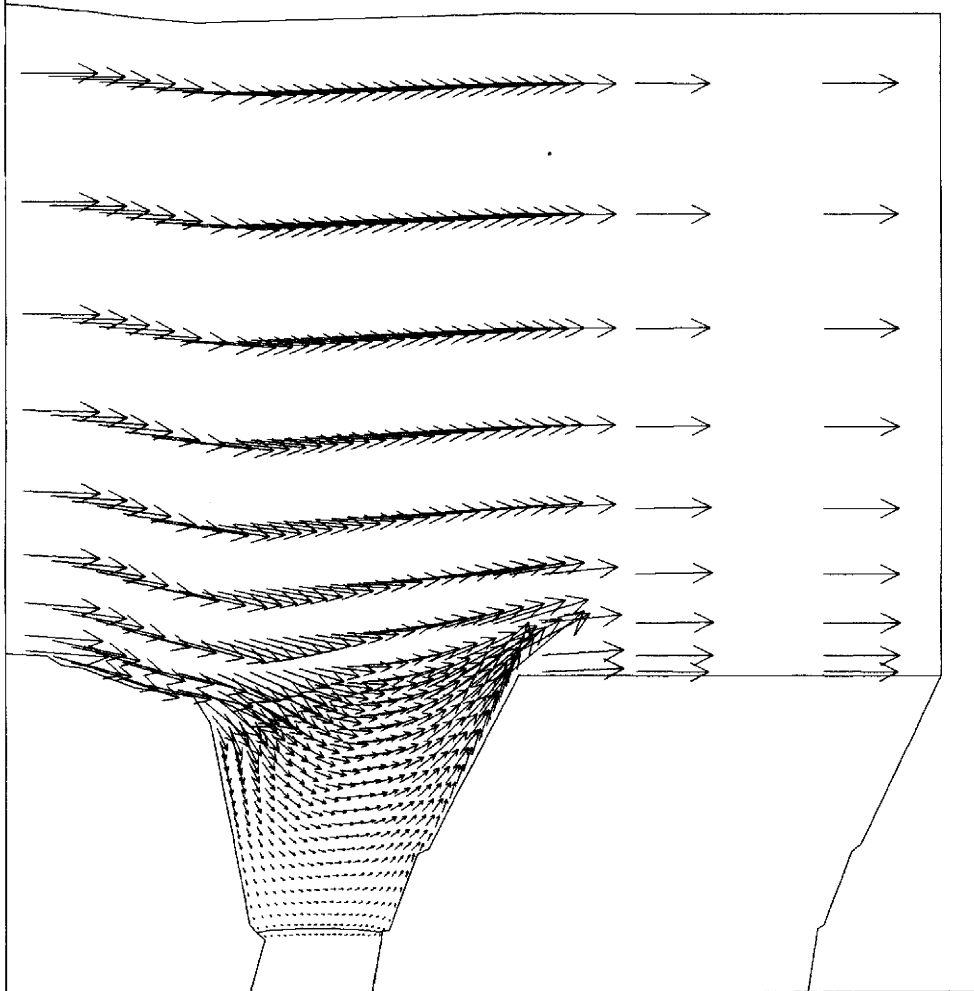
**SYBILLA Ltd.**  
*Managing Environment, Safety & Risk*

16 Ypsilandou, Maroussi GR 151 22 Athens, Greece  
Tel +30210-8024244 / Fax +30210-6141245  
e-mail : [mail@svbilla.gr](mailto:mail@svbilla.gr)

VAT No. EL 095487874



***Isthmus of Corinth protection, deepening and widening. Environmental Impact Assessment Study***



<b>CONTRACTING ENTITY</b>	<b>DENCO AE</b>
<b>CONTRACT PRICE</b>	<b>CONFIDENTIAL</b>
<b>YEAR</b>	<b>1994</b>
<b>PROJECT TYPE</b>	<b>ENVIRONMENTAL IMPACT ASSESSMENT STUDY</b>
<b>LOCATION</b>	<b>ATHENS – CORINTHIA</b>



**SYBILLA Ltd.**  
*Managing Environment, Safety & Risk*

16 Ypsilandou, Maroussi GR 151 22 Athens, Greece  
Tel +30210-8024244 / Fax +30210-6141245  
e-mail : [mail@svbilla.gr](mailto:mail@svbilla.gr)

VAT No. EL 095487874



***Port of Mytilene, Environmental Impact Assessment Study***

<b>CONTRACTING ENTITY</b>	<b>YPEHODE</b>
<b>CONTRACT PRICE</b>	<b>CONFIDENTIAL</b>
<b>YEAR</b>	<b>1993</b>
<b>PROJECT TYPE</b>	<b>ENVIRONMENTAL IMPACT ASSESSMENT STUDY</b>
<b>LOCATION</b>	<b>ATHENS - MYTILENE</b>





**SYBILLA Ltd.**  
*Managing Environment, Safety & Risk*

16 Ypsilandou, Maroussi GR 151 22 Athens, Greece  
Tel +30210-8024244 / Fax +30210-6141245  
e-mail : [mail@svbilla.gr](mailto:mail@svbilla.gr)

VAT No. EL 095487874



## ***Port of Santorini, Environmental Impact Assessment Study***



<b>CONTRACTING ENTITY</b>	<b>YPEHODE</b>
<b>CONTRACT PRICE</b>	<b>CONFIDENTIAL</b>
<b>YEAR</b>	<b>2000</b>
<b>PROJECT TYPE</b>	<b>ENVIRONMENTAL IMPACT ASSESSMENT STUDY</b>
<b>LOCATION</b>	<b>ATHENS - SANTORINI</b>



**SYBILLA Ltd.**  
*Managing Environment, Safety & Risk*

16 Ypsilandou, Maroussi GR 151 22 Athens, Greece  
Tel +30210-8024244 / Fax +30210-6141245  
e-mail : [mail@svbilla.gr](mailto:mail@svbilla.gr)

VAT No. EL 095487874



## ***Port of Tinos, Environmental Impact Assessment Study***



<b>CONTRACTING ENTITY</b>	<b>YPEHODE</b>
<b>CONTRACT PRICE</b>	<b>CONFIDENTIAL</b>
<b>YEAR</b>	<b>1995</b>
<b>PROJECT TYPE</b>	<b>ENVIRONMENTAL IMPACT ASSESSMENT STUDY</b>
<b>LOCATION</b>	<b>ATHENS - TINOS</b>



**SYBILLA Ltd.**  
*Managing Environment, Safety & Risk*

16 Ypsilandou, Maroussi GR 151 22 Athens, Greece  
Tel +30210-8024244 / Fax +30210-6141245  
e-mail : [mail@svbilla.gr](mailto:mail@svbilla.gr)

VAT No. EL 095487874



## ***Port of Heraklion, Environmental Impact Assessment Study***



<b>CONTRACTING ENTITY</b>	<b>YPEHODE</b>
<b>CONTRACT PRICE</b>	<b>CONFIDENTIAL</b>
<b>YEAR</b>	<b>1993</b>
<b>PROJECT TYPE</b>	<b>ENVIRONMENTAL IMPACT ASSESSMENT STUDY</b>
<b>LOCATION</b>	<b>ATHENS – HERAKLION</b>



**SYBILLA Ltd.**  
*Managing Environment, Safety & Risk*

16 Ypsilandou, Maroussi GR 151 22 Athens, Greece  
Tel +30210-8024244 / Fax +30210-6141245  
e-mail : [mail@svbilla.gr](mailto:mail@svbilla.gr)

VAT No. EL 095487874



## ***Port of Aleksandroupoli, Environmental Impact Assessment Study***



<b>CONTRACTING ENTITY</b>	<b>YPEHODE</b>
<b>CONTRACT PRICE</b>	<b>CONFIDENTIAL</b>
<b>YEAR</b>	<b>2000</b>
<b>PROJECT TYPE</b>	<b>ENVIRONMENTAL IMPACT ASSESSMENT STUDY</b>
<b>LOCATION</b>	<b>ATHENS – ALEKSANDROUPOLI</b>



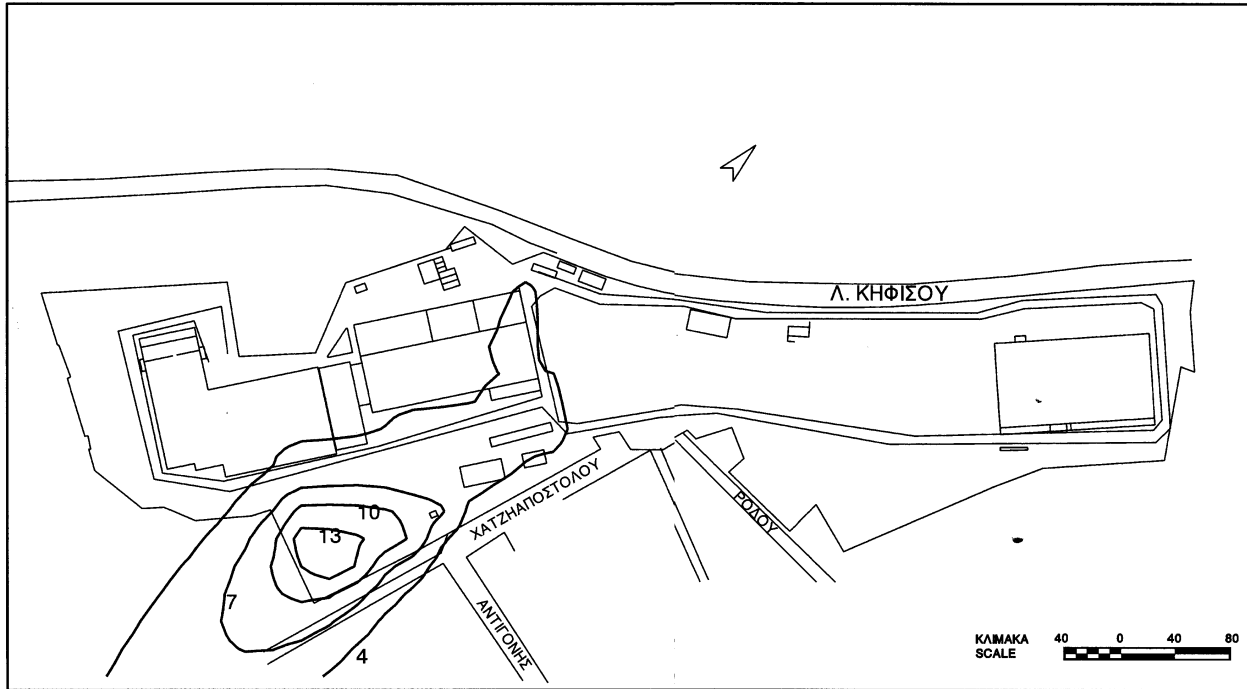
SYBILLA Ltd.  
Managing Environment, Safety & Risk

16 Ypsilandou, Maroussi GR 151 22 Athens, Greece  
Tel +30210-8024244 / Fax +30210-6141245  
e-mail : [mail@svbilla.gr](mailto:mail@svbilla.gr)

VAT No. EL 095487874



## Sepolia train depot, Environmental Impact Assessment Study



ΣΧΗΜΑ II.7 Ισοσυγκεντρωσιακές καμπύλες  
Δραστηριότητες Αμαξοστασίου Σεπολίων  
Ρύπος CO (σε  $\mu\text{g}/\text{m}^3$ ), Έτος 018

CONTRACTING ENTITY	OLYMPIC METRO
CONTRACT PRICE	CONFIDENTIAL
YEAR	1994
PROJECT TYPE	ENVIRONMENTAL IMPACT ASSESSMENT STUDY
LOCATION	ATHENS





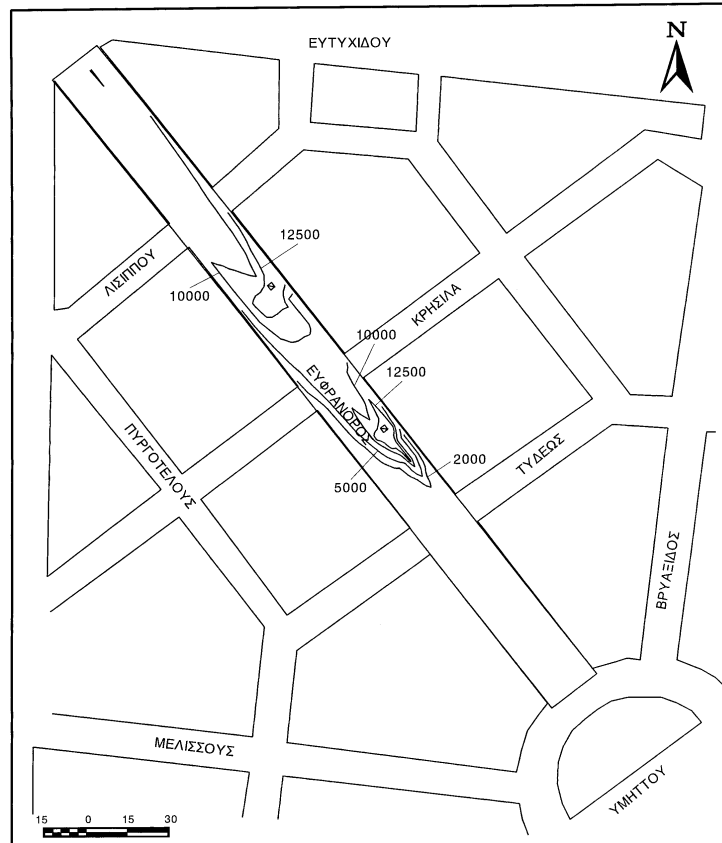
SYBILLA Ltd.  
Managing Environment, Safety & Risk

16 Ypsilandou, Maroussi GR 151 22 Athens, Greece  
Tel +30210-8024244 / Fax +30210-6141245  
e-mail : [mail@svbilla.gr](mailto:mail@svbilla.gr)

VAT No. EL 095487874



## Efranos square underground parking lot, Environmental Impact Assessment Study



ΜΕΛΕΤΗ ΠΕΡΙΒΑΛΛΟΝΤΙΚΩΝ ΕΠΙΠΤΩΣΕΩΝ  
ΥΠΟΓΕΙΟΥ ΣΤΑΘΜΟΥ ΑΥΤΟΚΙΝΗΤΩΝ ΠΛΑΤΕΙΑΣ ΕΥΦΡΑΝΟΡΟΣ  
ΙΣΟΣΥΓΚΕΝΤΡΩΤΙΚΕΣ ΚΑΜΠΥΛΕΣ ( $\mu\text{g}/\text{m}^3$ ) ΤΟΥ ΡΥΠΟΥ  
CO που οφείλεται στη λειτουργία του σταθμού.  
ΑΤΜΟΣΦΑΙΡΙΚΗ ΡΥΠΑΝΣΗ ΚΑΤΑ ΤΗ ΛΕΙΤΟΥΡΓΙΑ ΤΟΥ ΕΡΓΟΥ

CONTRACTING ENTITY	EYDESKA
CONTRACT PRICE	CONFIDENTIAL
YEAR	1994
PROJECT TYPE	ENVIRONMENTAL IMPACT ASSESSMENT STUDY
LOCATION	ATHENS



SYBILLA Ltd.  
Managing Environment, Safety & Risk

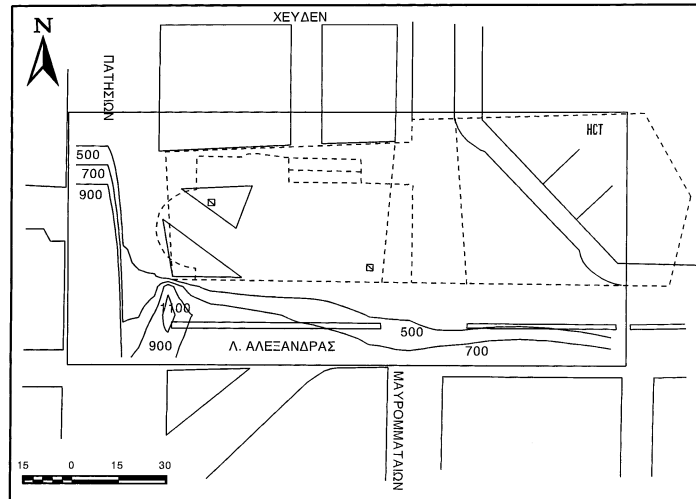
16 Ypsilandou, Maroussi GR 151 22 Athens, Greece  
Tel +30210-8024244 / Fax +30210-6141245  
e-mail : [mail@svbilla.gr](mailto:mail@svbilla.gr)

VAT No. EL 095487874



## Egypt square underground parking lot, Environmental Impact Assessment Study

ΜΕΛΕΤΗ ΠΕΡΙΒΑΛΛΟΝΤΙΚΩΝ ΕΠΙΠΤΩΣΕΩΝ  
ΥΠΟΓΕΙΟΥ ΣΤΑΘΜΟΥ ΑΥΤΟΚΙΝΗΤΩΝ  
ΠΛΑΤΕΙΑΣ ΑΙΓΥΠΤΟΥ



ΙΣΟΣΥΓΚΕΝΤΡΩΤΙΚΕΣ ΚΑΜΠΥΛΕΣ ( $\mu\text{g}/\text{m}^3$ ) ΤΟΥ ΡΥΠΟΥ  
VOC  
ΥΦΙΣΤΑΜΕΝΗ ΚΑΤΑΣΤΑΣΗ

CONTRACTING ENTITY	EYDESKA
CONTRACT PRICE	CONFIDENTIAL
YEAR	1994
PROJECT TYPE	ENVIROMENTAL IMPACT ASSESSMENT STUDY
LOCATION	ATHENS



SYBILLA Ltd.  
Managing Environment, Safety & Risk

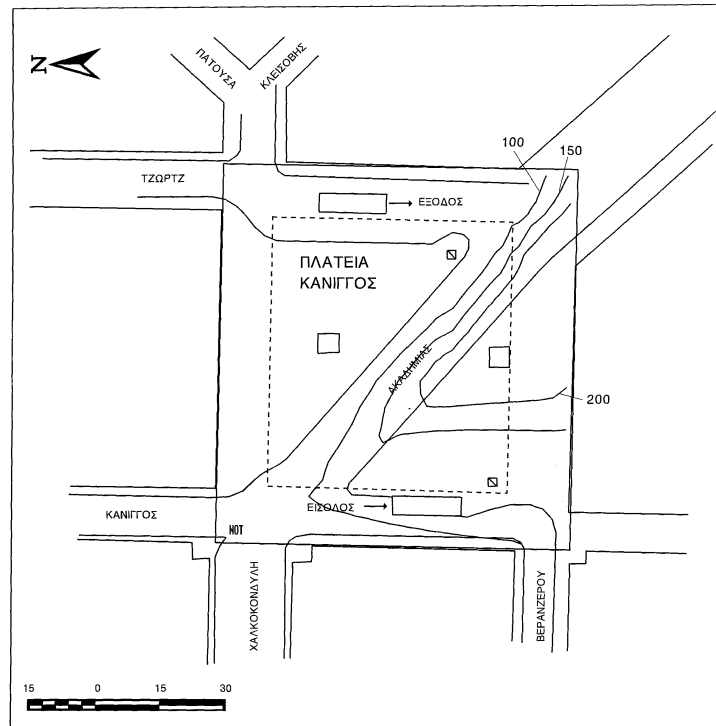
16 Ypsilandou, Maroussi GR 151 22 Athens, Greece  
Tel +30210-8024244 / Fax +30210-6141245  
e-mail : [mail@svbilla.gr](mailto:mail@svbilla.gr)

VAT No. EL 095487874



## Kanigos square underground parking lot, Environmental Impact Assessment Study

ΜΕΛΕΤΗ ΠΕΡΙΒΑΛΛΟΝΤΙΚΩΝ ΕΠΙΠΤΩΣΕΩΝ  
ΥΠΟΓΕΙΟΥ ΣΤΑΘΜΟΥ ΑΥΤΟΚΙΝΗΤΩΝ  
ΠΛΑΤΕΙΑΣ ΚΑΝΙΓΓΟΣ



ΙΣΟΣΥΓΚΕΝΤΡΩΤΙΚΕΣ ΚΑΜΠΥΛΕΣ ( $\mu\text{g}/\text{m}^3$ ) ΤΟΥ ΡΥΠΟΥ  
 $\text{NO}_x$   
ΥΦΙΣΤΑΜΕΝΗ ΚΑΤΑΣΤΑΣΗ

CONTRACTING ENTITY	EYDESKA
CONTRACT PRICE	CONFIDENTIAL
YEAR	1994
PROJECT TYPE	ENVIRONMENTAL IMPACT ASSESSMENT STUDY
LOCATION	ATHENS



SYBILLA Ltd.  
Managing Environment, Safety & Risk

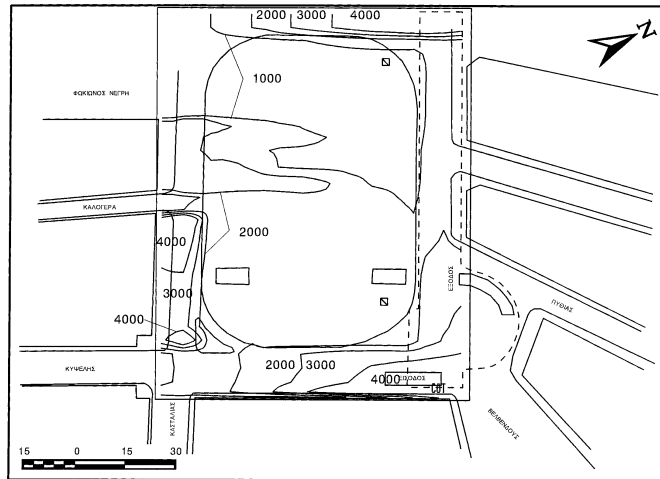
16 Ypsilandou, Maroussi GR 151 22 Athens, Greece  
Tel +30210-8024244 / Fax +30210-6141245  
e-mail : [mail@svbilla.gr](mailto:mail@svbilla.gr)

VAT No. EL 095487874



## Kipseli square underground parking lot, Environmental Impact Assessment Study

ΜΕΛΕΤΗ ΠΕΡΙΒΑΛΛΟΝΤΙΚΩΝ ΕΠΙΠΤΩΣΕΩΝ  
ΥΠΟΓΕΙΟΥ ΣΤΑΘΜΟΥ ΑΥΤΟΚΙΝΗΤΩΝ  
ΠΛΑΤΕΙΑΣ ΚΥΨΕΛΗΣ



ΙΣΟΣΥΓΚΕΝΤΡΩΤΙΚΕΣ ΚΑΜΠΥΛΕΣ (µg/m<sup>3</sup>) ΤΟΥ ΡΥΠΟΥ  
CO  
ΥΦΙΣΤΑΜΕΝΗ ΚΑΤΑΣΤΑΣΗ

CONTRACTING ENTITY	EYDESKA
CONTRACT PRICE	CONFIDENTIAL
YEAR	1994
PROJECT TYPE	ENVIRONMENTAL IMPACT ASSESSMENT STUDY
LOCATION	ATHENS



**SYBILLA Ltd.**  
*Managing Environment, Safety & Risk*

16 Ypsilandou, Maroussi GR 151 22 Athens, Greece  
 Tel +30210-8024244 / Fax +30210-6141245  
 e-mail : [mail@sybilla.gr](mailto:mail@sybilla.gr)

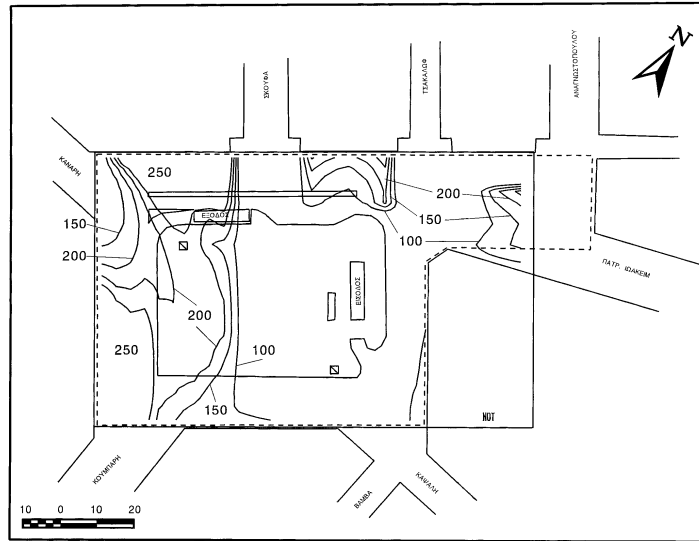
VAT No. EL 095487874



CERTIFIED M.S.  
 ISO 9001:2015  
 ISO 14001:2015

***Kolonaki square underground parking lot, Environmental Impact Assessment Study***

ΜΕΛΕΤΗ ΠΕΡΙΒΑΛΛΟΝΤΙΚΩΝ ΕΠΙΠΤΩΣΕΩΝ  
 ΥΠΟΓΕΙΟΥ ΣΤΑΘΜΟΥ ΑΥΤΟΚΙΝΗΤΩΝ  
 ΠΛΑΤΕΙΑΣ ΚΟΛΩΝΑΚΙΟΥ



ΙΣΟΣΥΓΚΕΝΤΡΩΤΙΚΕΣ ΚΑΜΠΥΛΕΣ (µg/m³) ΤΟΥ ΡΥΠΟΥ  
 NOx  
 ΥΦΙΣΤΑΜΕΝΗ ΚΑΤΑΣΤΑΣΗ

<b>CONTRACTING ENTITY</b>	<b>ΕΥΔΕΣΚΑ</b>
<b>CONTRACT PRICE</b>	<b>CONFIDENTIAL</b>
<b>YEAR</b>	<b>1994</b>
<b>PROJECT TYPE</b>	<b>ENVIRONMENTAL IMPACT ASSESSMENT STUDY</b>
<b>LOCATION</b>	<b>ATHENS</b>





**SYBILLA Ltd.**  
*Managing Environment, Safety & Risk*

16 Ypsilandou, Maroussi GR 151 22 Athens, Greece  
Tel +30210-8024244 / Fax +30210-6141245  
e-mail : [mail@svbilla.gr](mailto:mail@svbilla.gr)

VAT No. EL 095487874



***Rizari street and Courthouse underground parking lot, Environmental Impact Assessment Study***



<b>CONTRACTING ENTITY</b>	<b>EYDESKA</b>
<b>CONTRACT PRICE</b>	<b>CONFIDENTIAL</b>
<b>YEAR</b>	<b>1994</b>
<b>PROJECT TYPE</b>	<b>ENVIRONMENTAL IMPACT ASSESSMENT STUDY</b>
<b>LOCATION</b>	<b>ATHENS</b>



**SYBILLA Ltd.**  
*Managing Environment, Safety & Risk*

16 Ypsilandou, Maroussi GR 151 22 Athens, Greece  
Tel +30210-8024244 / Fax +30210-6141245  
e-mail : [mail@svbilla.gr](mailto:mail@svbilla.gr)

VAT No. EL 095487874



***Megaron Athens concert Hall underground parking lot, Environmental Impact Assessment Study***



<b>CONTRACTING ENTITY</b>	<b>ΕΥΔΕΚΣΑ</b>
<b>CONTRACT PRICE</b>	<b>CONFIDENTIAL</b>
<b>YEAR</b>	<b>1994</b>
<b>PROJECT TYPE</b>	<b>ENVIRONMENTAL IMPACT ASSESSMENT STUDY</b>
<b>LOCATION</b>	<b>ATHENS</b>



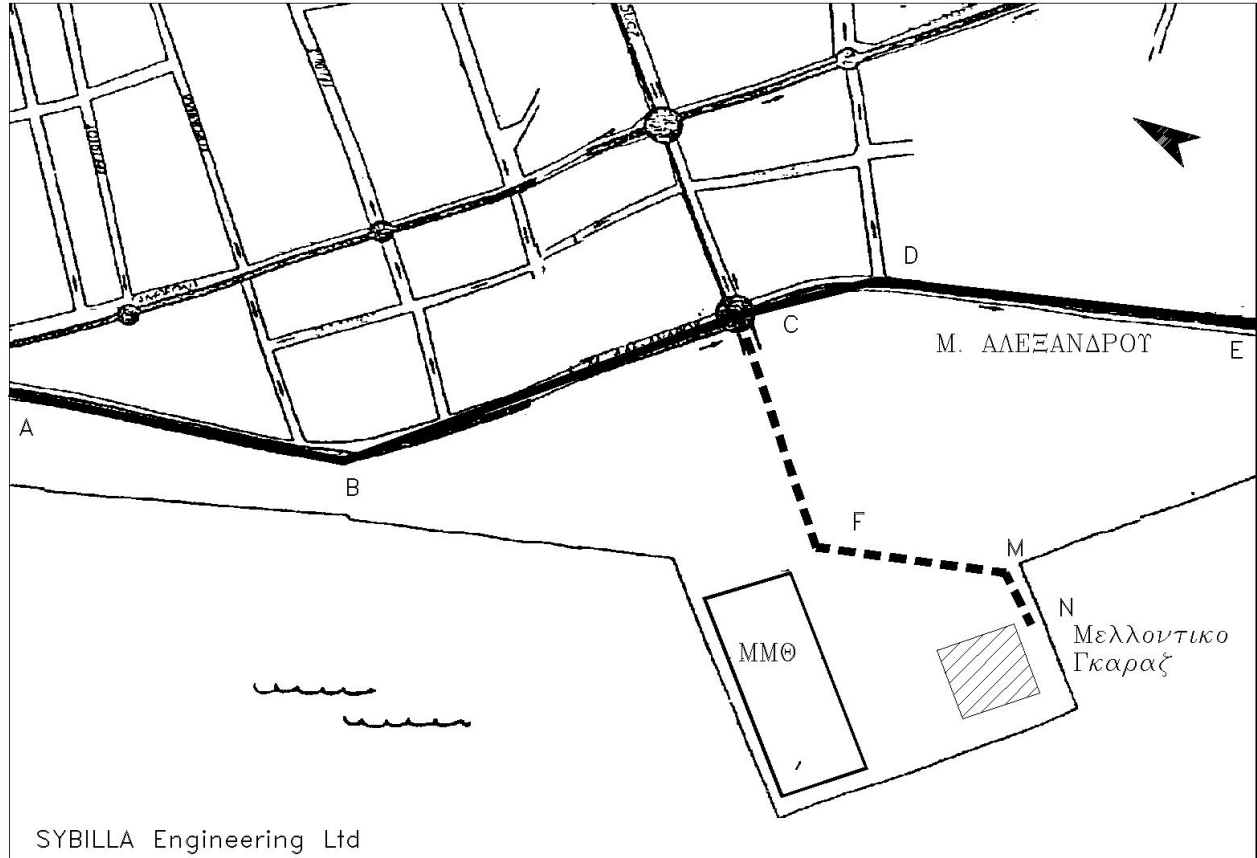
SYBILLA Ltd.  
Managing Environment, Safety & Risk

16 Ypsilandou, Maroussi GR 151 22 Athens, Greece  
Tel +30210-8024244 / Fax +30210-6141245  
e-mail : [mail@svbilla.gr](mailto:mail@svbilla.gr)

VAT No. EL 095487874



### Thessaloniki Concert Hall underground parking lot, Environmental Impact Study



SYBILLA Engineering Ltd

ΜΕΛΛΟΝΤΙΚΗ ΚΑΤΑΣΤΑΣΗ

CONTRACTING ENTITY	EYDESKA
CONTRACT PRICE	CONFIDENTIAL
YEAR	1998
PROJECT TYPE	ENVIRONMENTAL IMPACT ASSESSMENT STUDY
LOCATION	ATHENS - THESSALONIKI



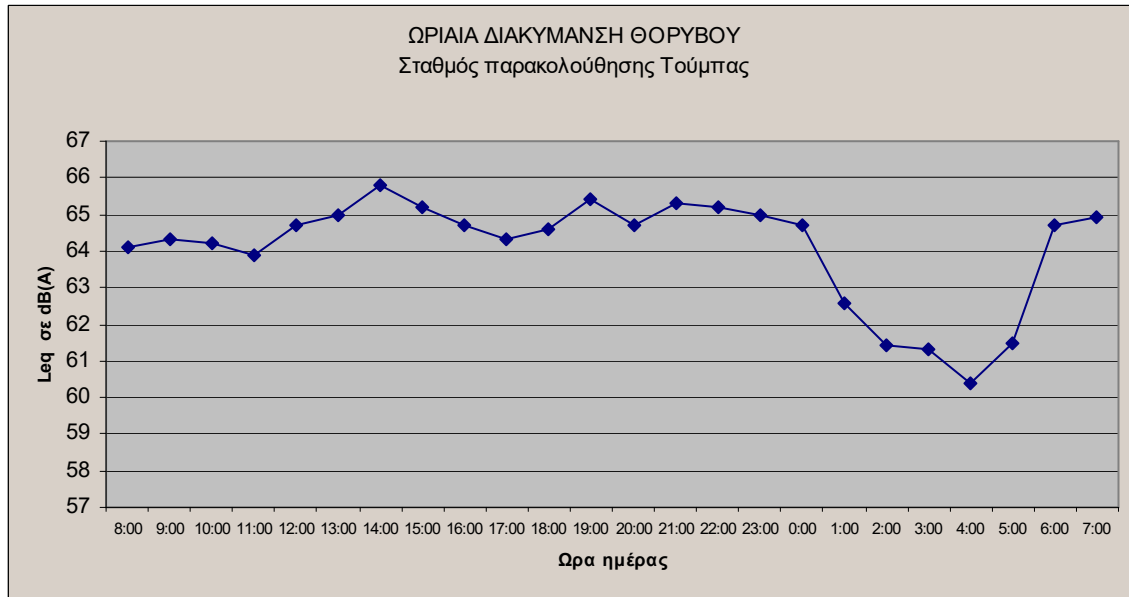
SYBILLA Ltd.  
Managing Environment, Safety & Risk

16 Ypsilandou, Maroussi GR 151 22 Athens, Greece  
Tel +30210-8024244 / Fax +30210-6141245  
e-mail : [mail@svbilla.gr](mailto:mail@svbilla.gr)

VAT No. EL 095487874



## "Toumpa square regeneration" underground parking lot, Environmental Impact Assessment Study



<b>CONTRACTING ENTITY</b>	<b>THESSALONIKI REGULATING ORGANIZATION</b>
<b>CONTRACT PRICE</b>	<b>CONFIDENTIAL</b>
<b>YEAR</b>	<b>2002</b>
<b>PROJECT TYPE</b>	<b>ENVIRONMENTAL IMPACT ASSESSMENT STUDY</b>
<b>LOCATION</b>	<b>ATHENS - THESSALONIKI</b>



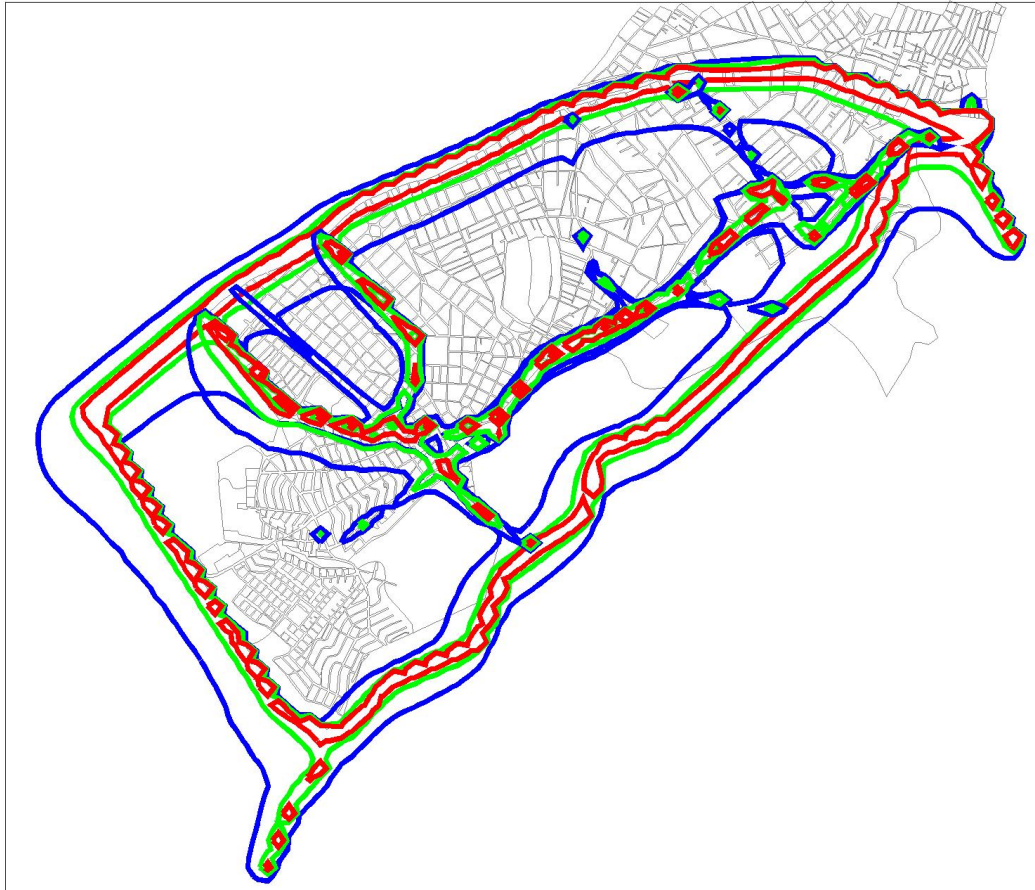
**SYBILLA Ltd.**  
*Managing Environment, Safety & Risk*

16 Ypsilandou, Maroussi GR 151 22 Athens, Greece  
Tel +30210-8024244 / Fax +30210-6141245  
e-mail : [mail@svbilla.gr](mailto:mail@svbilla.gr)

VAT No. EL 095487874



***Regional Highway of Imittos, municipalities Ag. Paraskevi, Cholargos, Papagou,  
Environmental Impact Assessment Study***



<b>CONTRACTING ENTITY</b>	<b>MUNICIPALITIES</b>
<b>CONTRACT PRICE</b>	<b>CONFIDENTIAL</b>
<b>YEAR</b>	<b>2000</b>
<b>PROJECT TYPE</b>	<b>ENVIRONMENTAL IMPACT ASSESSMENT STUDY</b>
<b>LOCATION</b>	<b>ATHENS</b>





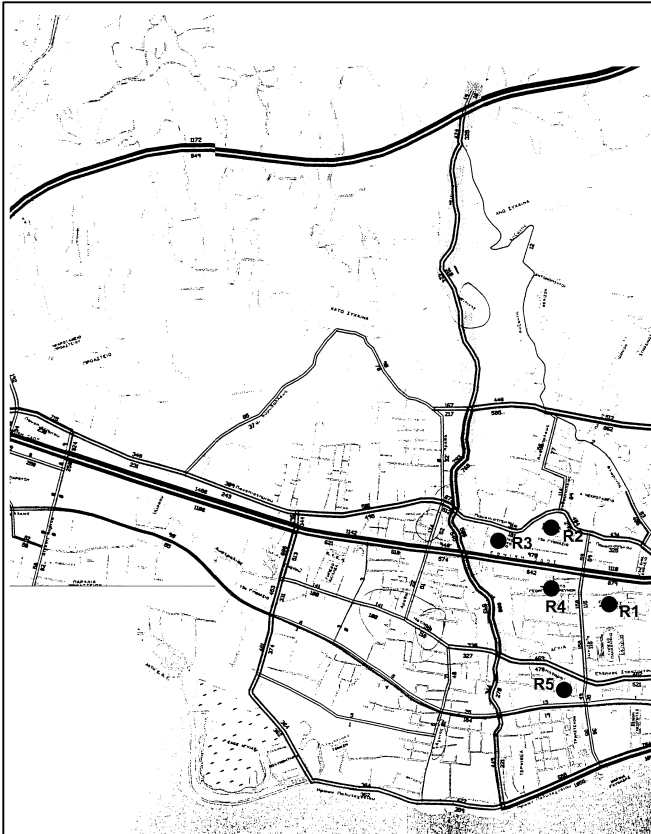
**SYBILLA Ltd.**  
*Managing Environment, Safety & Risk*

16 Ypsilandou, Maroussi GR 151 22 Athens, Greece  
Tel +30210-8024244 / Fax +30210-6141245  
e-mail : [mail@svbilla.gr](mailto:mail@svbilla.gr)

VAT No. EL 095487874



***Pre-study, placing Study and Environmental Impact Assessment Study for the Interconnection of Patras bypass and the coastal road, through the Melichos stream***



<b>CONTRACTING ENTITY</b>	<b>YPEHODE</b>
<b>CONTRACT PRICE</b>	<b>CONFIDENTIAL</b>
<b>YEAR</b>	<b>1999</b>
<b>PROJECT TYPE</b>	<b>ENVIRONMENTAL IMPACT ASSESSMENT STUDY</b>
<b>LOCATION</b>	<b>ATHENS</b>



**SYBILLA Ltd.**  
*Managing Environment, Safety & Risk*

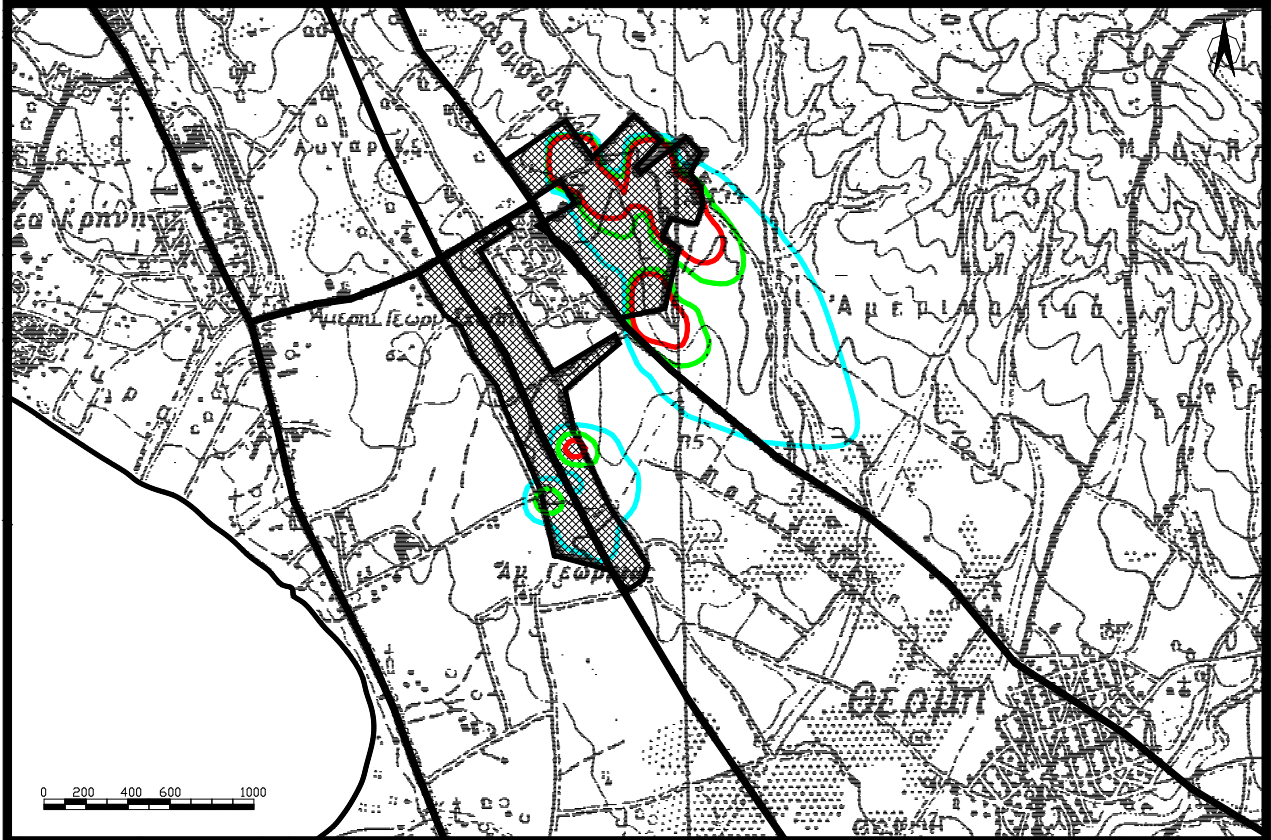
16 Ypsilandou, Maroussi GR 151 22 Athens, Greece  
 Tel +30210-8024244 / Fax +30210-6141245  
 e-mail : [mail@svbilla.gr](mailto:mail@svbilla.gr)

VAT No. EL 095487874



CERTIFIED M.S.  
 ISO 9001:2015  
 ISO 14001:2015

***THERMI THESSALONIKI AGROPOLIS, Environmental Impact Assessment Study***



<b>CONTRACTING ENTITY</b>	<b>AGROPOLIS</b>
<b>CONTRACT PRICE</b>	<b>CONFIDENTIAL</b>
<b>YEAR</b>	<b>1997</b>
<b>PROJECT TYPE</b>	<b>ENVIRONMENTAL IMPACT ASSESSMENT STUDY</b>
<b>LOCATION</b>	<b>ATHENS - THESSALONIKI</b>



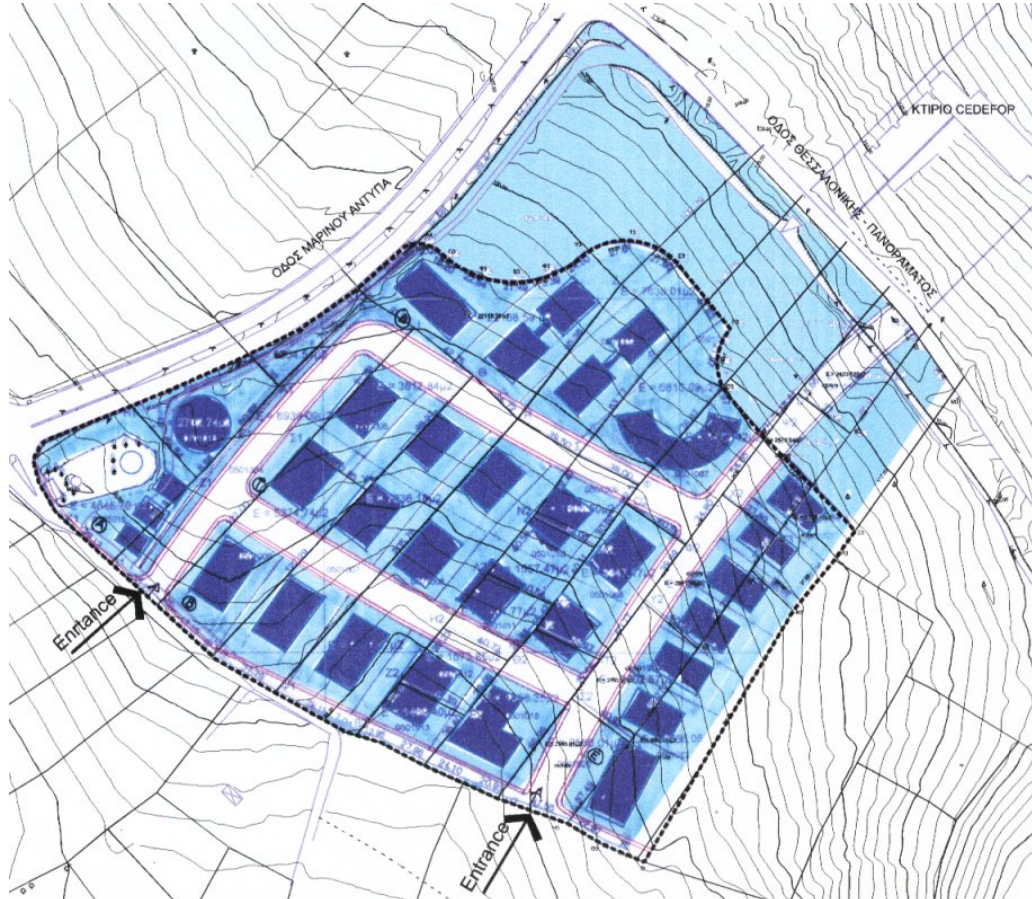
**SYBILLA Ltd.**  
*Managing Environment, Safety & Risk*

16 Ypsilandou, Maroussi GR 151 22 Athens, Greece  
Tel +30210-8024244 / Fax +30210-6141245  
e-mail : [mail@svbilla.gr](mailto:mail@svbilla.gr)

VAT No. EL 095487874



## ***THERMI THESSALONIKI TECHNOPSIS, Environmental Impact Assessment Study***



<b>CONTRACTING ENTITY</b>	<b>TECHNOPSIS A.E</b>
<b>CONTRACT PRICE</b>	<b>CONFIDENTIAL</b>
<b>YEAR</b>	<b>2003</b>
<b>PROJECT TYPE</b>	<b>ENVIRONMENTAL IMPACT ASSESSMENT STUDY</b>
<b>LOCATION</b>	<b>ATHENS - THESSALONIKI</b>



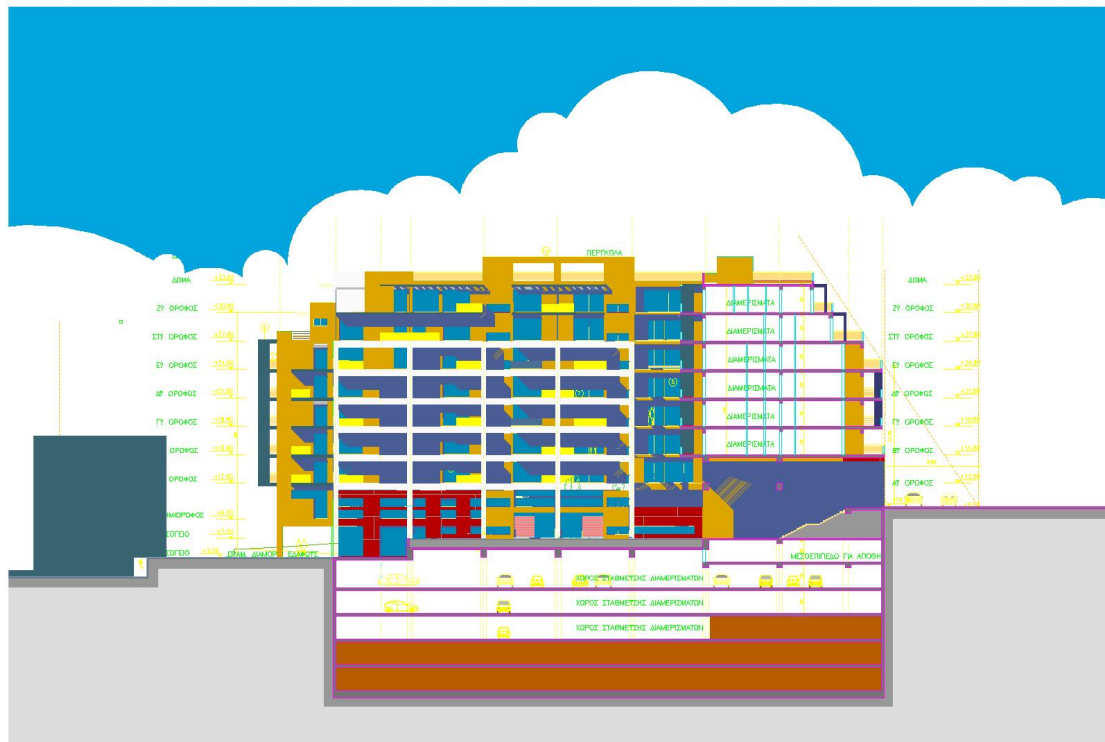
**SYBILLA Ltd.**  
*Managing Environment, Safety & Risk*

16 Ypsilandou, Maroussi GR 151 22 Athens, Greece  
Tel +30210-8024244 / Fax +30210-6141245  
e-mail : [mail@svbilla.gr](mailto:mail@svbilla.gr)

VAT No. EL 095487874



## Construction and operation of the underground parking lot "Aleksandreia" in Kypseli. Environmental Impact Assessment Study



<b>CONTRACTING ENTITY</b>	<b>MPAMPIS VOVOS-INTERNATIONAL TECHNICAL AE</b>
<b>CONTRACT PRICE</b>	<b>CONFIDENTIAL</b>
<b>YEAR</b>	<b>2004-2005</b>
<b>PROJECT TYPE</b>	<b>ENVIRONMENTAL IMPACT ASSESSMENT STUDY</b>
<b>LOCATION</b>	<b>ATHENS</b>





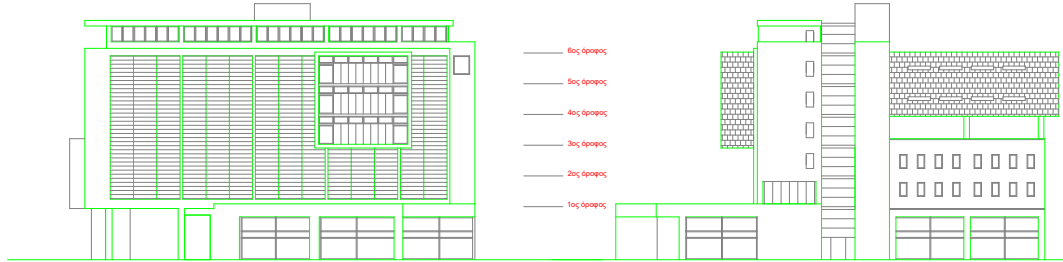
**SYBILLA Ltd.**  
*Managing Environment, Safety & Risk*

16 Ypsilandou, Maroussi GR 151 22 Athens, Greece  
Tel +30210-8024244 / Fax +30210-6141245  
e-mail : [mail@svbilla.gr](mailto:mail@svbilla.gr)

VAT No. EL 095487874



## Serres Municipality Asset Development



<b>CONTRACTING ENTITY</b>	<b>SERRES MUNICIPALITY</b>
<b>CONTRACT PRICE</b>	<b>CONFIDENTIAL</b>
<b>YEAR</b>	<b>2001</b>
<b>PROJECT TYPE</b>	<b>ENVIRONMENTAL IMPACT ASSESSMENT STUDY</b>
<b>LOCATION</b>	<b>ATHENS - SERRES</b>





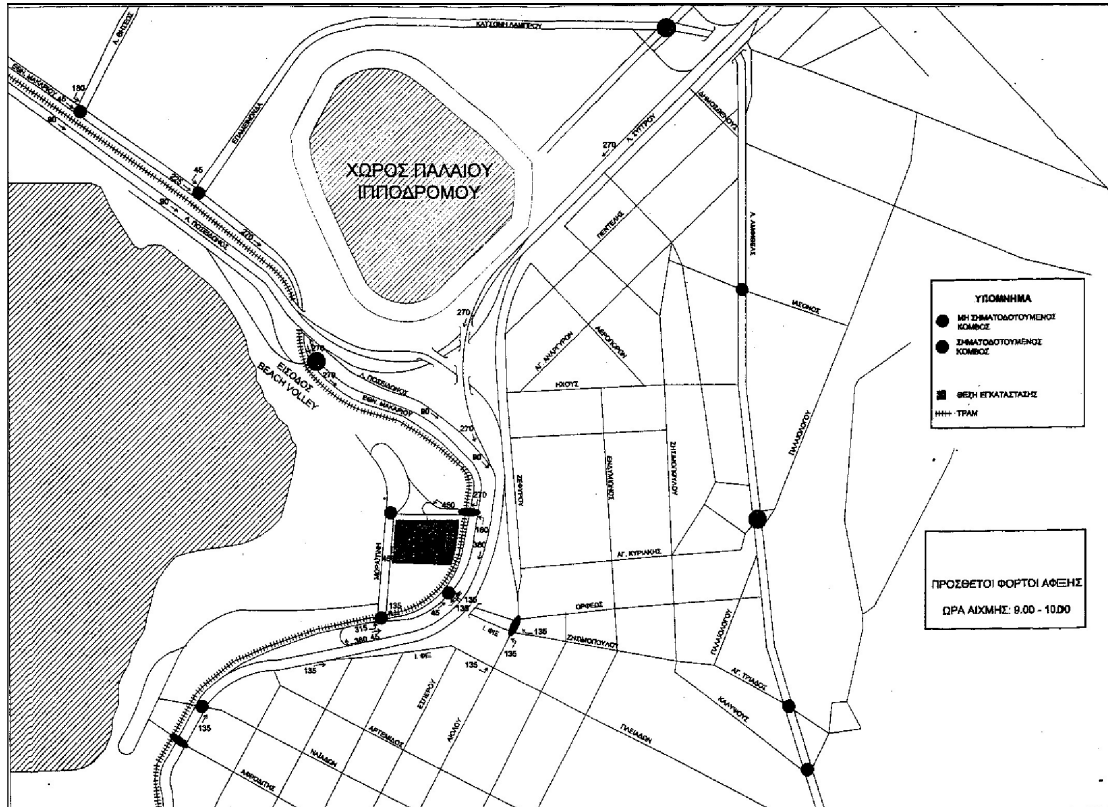
SYBILLA Ltd.  
Managing Environment, Safety & Risk

16 Ypsilandou, Maroussi GR 151 22 Athens, Greece  
Tel +30210-8024244 / Fax +30210-6141245  
e-mail : [mail@svbilla.gr](mailto:mail@svbilla.gr)

VAT No. EL 095487874



## Construction and operation of a Shopping mall with market, recreation areas, shops and underground parking lot in P. Faliro



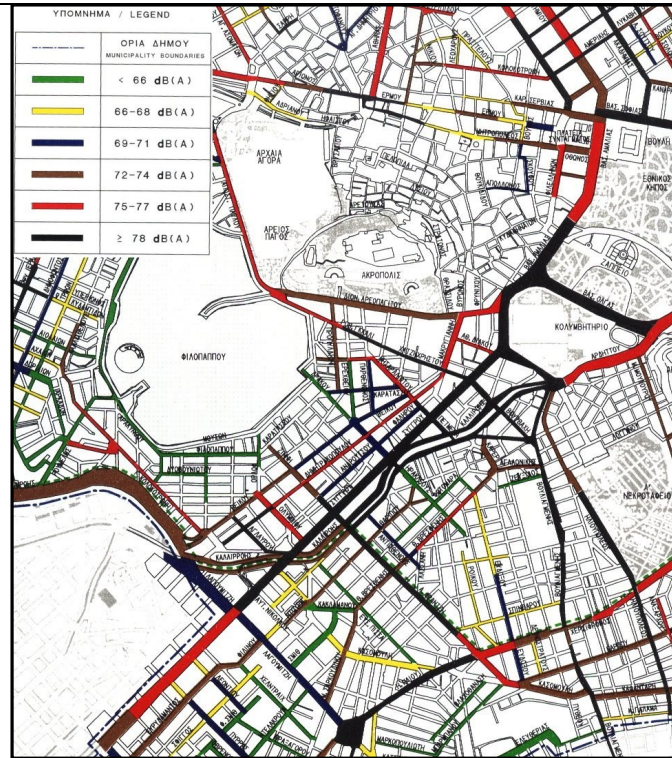
CONTRACTING ENTITY	CARREFOUR
CONTRACT PRICE	CONFIDENTIAL
YEAR	2004
PROJECT TYPE	ENVIRONMENTAL IMPACT ASSESSMENT STUDY
LOCATION	ATHENS – P.FALIRO



**SYBILLA Ltd.**  
*Managing Environment, Safety & Risk*

16 Ypsilandou, Maroussi GR 151 22 Athens, Greece  
 Tel +30210-8024244 / Fax +30210-6141245  
 e-mail : [mail@svbilla.gr](mailto:mail@svbilla.gr)

VAT No. EL 095487874



***Royal Olympic Hotel upgrade works, Environmental Impact Assessment Study***

<b>CONTRACTING ENTITY</b>	<b>ROYAL OLYMPIC HOTEL</b>
<b>CONTRACT PRICE</b>	<b>CONFIDENTIAL</b>
<b>YEAR</b>	<b>2005</b>
<b>PROJECT TYPE</b>	<b>ENVIRONMENTAL IMPACT ASSESSMENT STUDY</b>
<b>LOCATION</b>	<b>ATHENS</b>



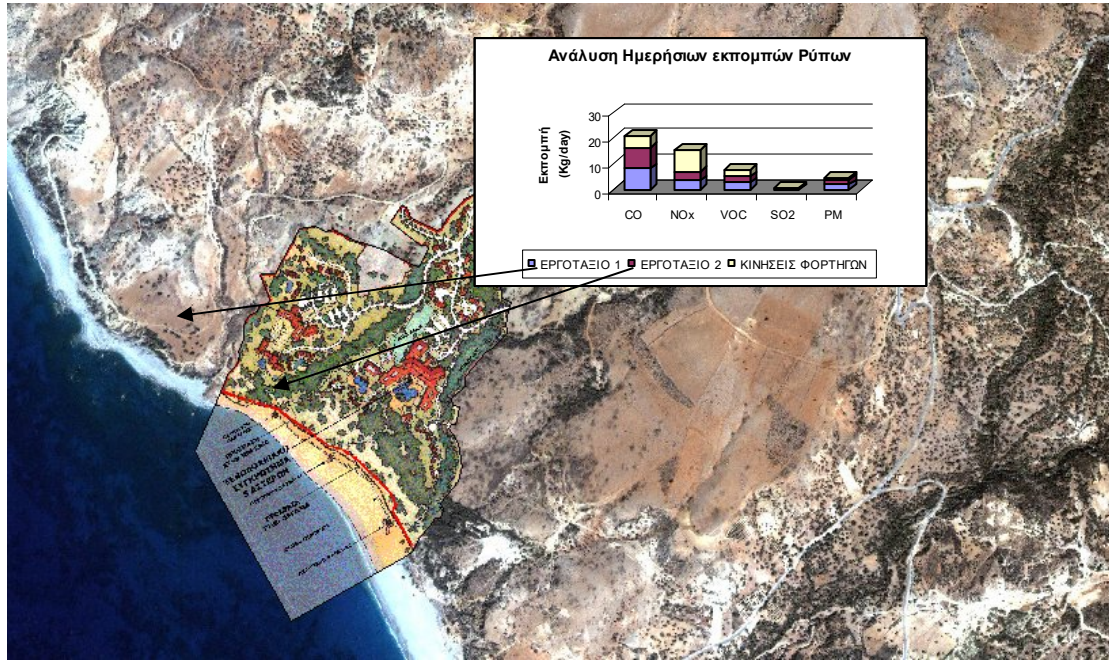
SYBILLA Ltd.  
Managing Environment, Safety & Risk

16 Ypsilandou, Maroussi GR 151 22 Athens, Greece  
Tel +30210-8024244 / Fax +30210-6141245  
e-mail : [mail@svbilla.gr](mailto:mail@svbilla.gr)

VAT No. EL 095487874



## Model Tourist Activity growth in Triopetra, Rethymno. Environmental Impact Assessment Study



CONTRACTING ENTITY	ΑΔΚ ΑΕ
CONTRACT PRICE	CONFIDENTIAL
YEAR	2005
PROJECT TYPE	ENVIRONMENTAL IMPACT ASSESSMENT STUDY
LOCATION	ATHENS



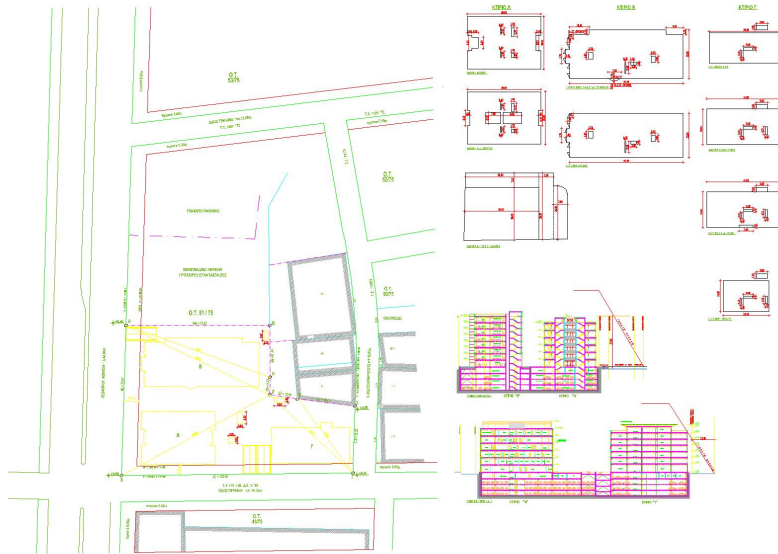
**SYBILLA Ltd.**  
*Managing Environment, Safety & Risk*

16 Ypsilandou, Maroussi GR 151 22 Athens, Greece  
Tel +30210-8024244 / Fax +30210-6141245  
e-mail : [mail@svbilla.gr](mailto:mail@svbilla.gr)

VAT No. EL 095487874



***Construction and operation of a three building complex, offices, shops and underground parking lot of Athens Stock House***



<b>CONTRACTING ENTITY</b>	<b>MPAMPIS VOVOS-INTERNATIONAL TECHNICAL AE</b>
<b>CONTRACT PRICE</b>	<b>CONFIDENTIAL</b>
<b>YEAR</b>	<b>2005</b>
<b>PROJECT TYPE</b>	<b>ENVIRONMENTAL IMPACT ASSESSMENT STUDY</b>
<b>LOCATION</b>	<b>ATHENS</b>





**SYBILLA Ltd.**  
*Managing Environment, Safety & Risk*

16 Ypsilandou, Maroussi GR 151 22 Athens, Greece  
Tel +30210-8024244 / Fax +30210-6141245  
e-mail : [mail@svbilla.gr](mailto:mail@svbilla.gr)

VAT No. EL 095487874



***Construction and operation of a three building complex, offices, shops and underground parking lot of Athens Stock House***



<b>CONTRACTING ENTITY</b>	<b>MPAMPIS VOVOS-INTERNATIONAL TECHNICAL AE</b>
<b>CONTRACT PRICE</b>	<b>CONFIDENTIAL</b>
<b>YEAR</b>	<b>2005</b>
<b>PROJECT TYPE</b>	<b>ENVIRONMENTAL IMPACT ASSESSMENT STUDY</b>
<b>LOCATION</b>	<b>ATHENS</b>





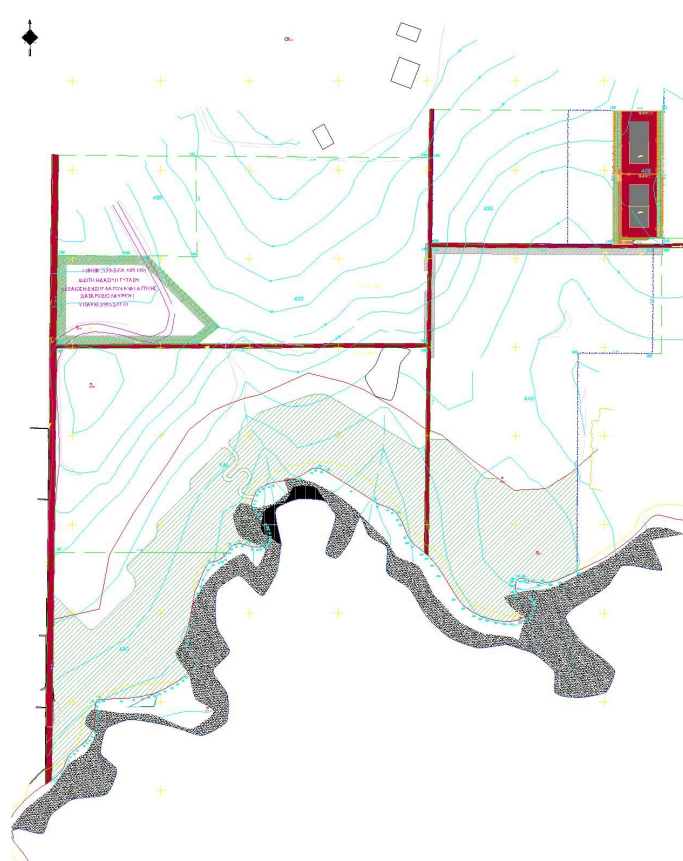
**SYBILLA Ltd.**  
*Managing Environment, Safety & Risk*

16 Ypsilandou, Maroussi GR 151 22 Athens, Greece  
Tel +30210-8024244 / Fax +30210-6141245  
e-mail : [mail@svbilla.gr](mailto:mail@svbilla.gr)

VAT No. EL 095487874



## ***Construction and operation of a 4-star Hotel complex in Pountazeza Lavrio (plot A)***



<b>CONTRACTING ENTITY</b>	<b>MPAMPIS VOVOS-INTERNATIONAL TECHNICAL AE</b>
<b>CONTRACT PRICE</b>	<b>CONFIDENTIAL</b>
<b>YEAR</b>	<b>2005</b>
<b>PROJECT TYPE</b>	<b>ENVIRONMENTAL IMPACT ASSESSMENT STUDY</b>
<b>LOCATION</b>	<b>ATHENS-LAVRIO</b>



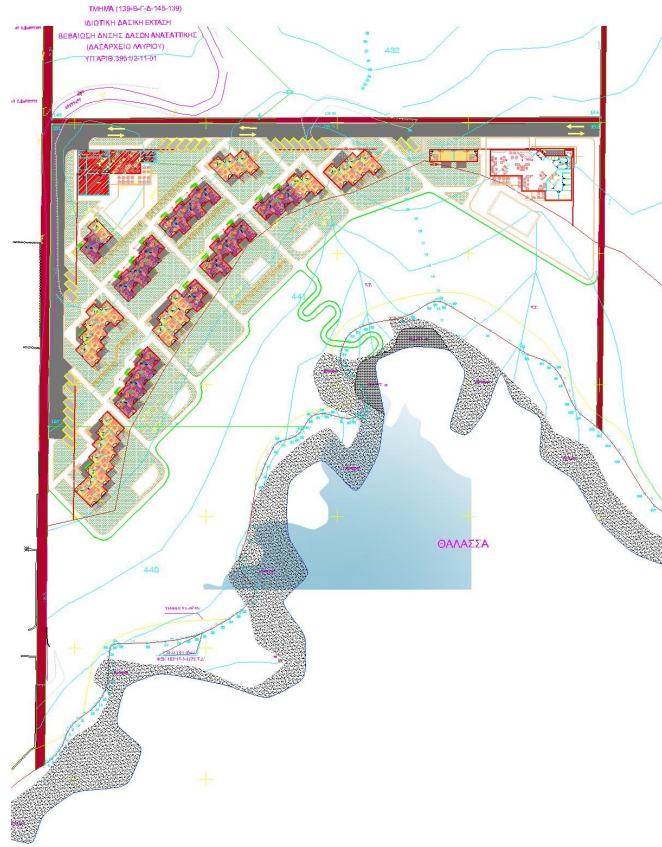
**SYBILLA Ltd.**  
*Managing Environment, Safety & Risk*

16 Ypsilandou, Maroussi GR 151 22 Athens, Greece  
Tel +30210-8024244 / Fax +30210-6141245  
e-mail : [mail@svbilla.gr](mailto:mail@svbilla.gr)

VAT No. EL 095487874



## ***Construction and operation of a 4-star Hotel complex in Pountazeza Lavrio (plot B)***



<b>CONTRACTING ENTITY</b>	<b>MPAMPIS VOVOS-INTERNATIONAL TECHNICAL AE</b>
<b>CONTRACT PRICE</b>	<b>CONFIDENTIAL</b>
<b>YEAR</b>	<b>2005</b>
<b>PROJECT TYPE</b>	<b>ENVIRONMENTAL IMPACT ASSESSMENT STUDY</b>
<b>LOCATION</b>	<b>ATHENS-LAVRIO</b>



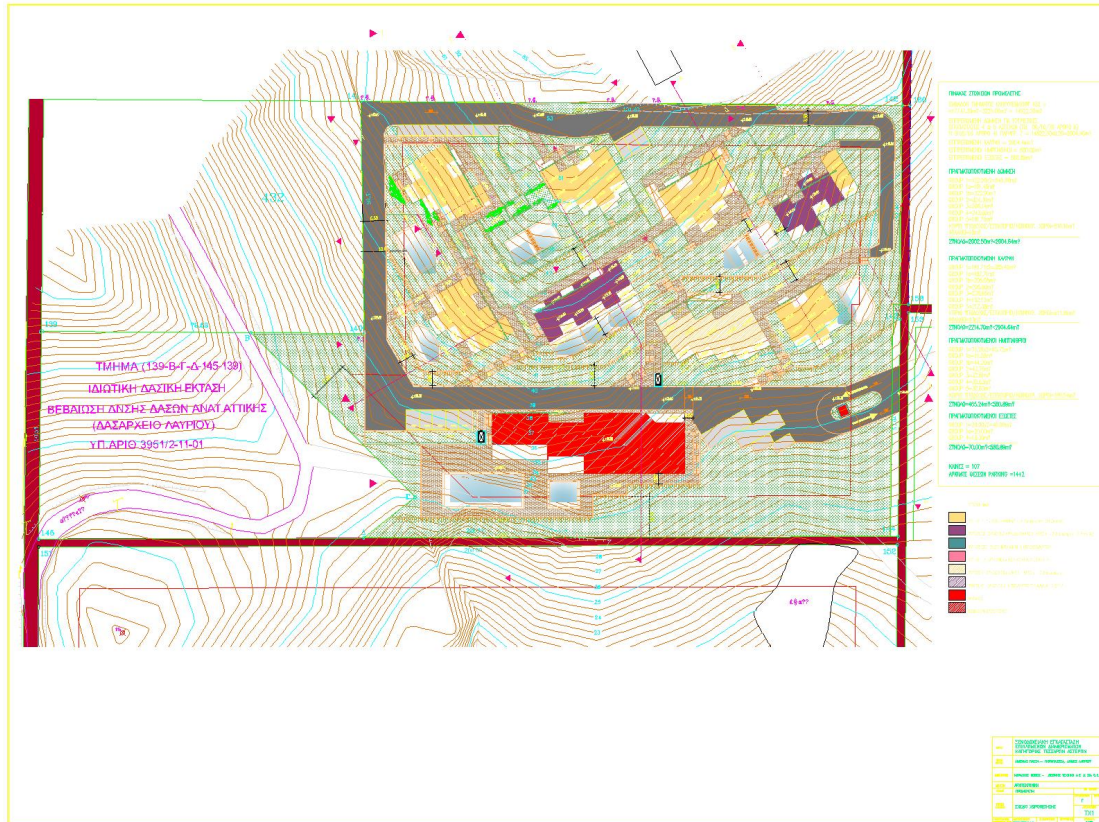
**SYBILLA Ltd.**  
*Managing Environment, Safety & Risk*

16 Ypsilandou, Maroussi GR 151 22 Athens, Greece  
Tel +30210-8024244 / Fax +30210-6141245  
e-mail : [mail@svbilla.gr](mailto:mail@svbilla.gr)

VAT No. EL 095487874



### **Construction and operation of a 4-star Hotel complex in Pountazeza Lavrio (plot C)**



<b>CONTRACTING ENTITY</b>	<b>MPAMPIS VOVOS-INTERNATIONAL TECHNICAL AE</b>
<b>CONTRACT PRICE</b>	<b>CONFIDENTIAL</b>
<b>YEAR</b>	<b>2005</b>
<b>PROJECT TYPE</b>	<b>ENVIRONMENTAL IMPACT ASSESSMENT STUDY</b>
<b>LOCATION</b>	<b>ATHENS-LAVRIO</b>





**SYBILLA Ltd.**  
*Managing Environment, Safety & Risk*

16 Ypsilandou, Maroussi GR 151 22 Athens, Greece  
 Tel +30210-8024244 / Fax +30210-6141245  
 e-mail : [mail@svbilla.gr](mailto:mail@svbilla.gr)

VAT No. EL 095487874



CERTIFIED M.S.  
 ISO 9001:2015  
 ISO 14001:2015

**Road Network Miloi-Kyverri-Astros-Tiros-Fokianos-Kyparisi (Fokianos-Kiparissi part), ENVIRONMENTAL IMPACT ASSESSMENT SCOPING-STUDY**



<b>CONTRACTING ENTITY</b>	<b>REGIONAL GOVERNMENT OF PElOPONNISIS (COOPERATION WITH A.KARAGIANNIS)</b>
<b>CONTRACT PRICE</b>	<b>CONFIDENTIAL</b>
<b>YEAR</b>	<b>2003-2005</b>
<b>PROJECT TYPE</b>	<b>ENVIRONMENTAL IMPACT ASSESSMENT SCOPING-STUDY</b>
<b>LOCATION</b>	<b>ATHENS-PELOPONISSOS</b>



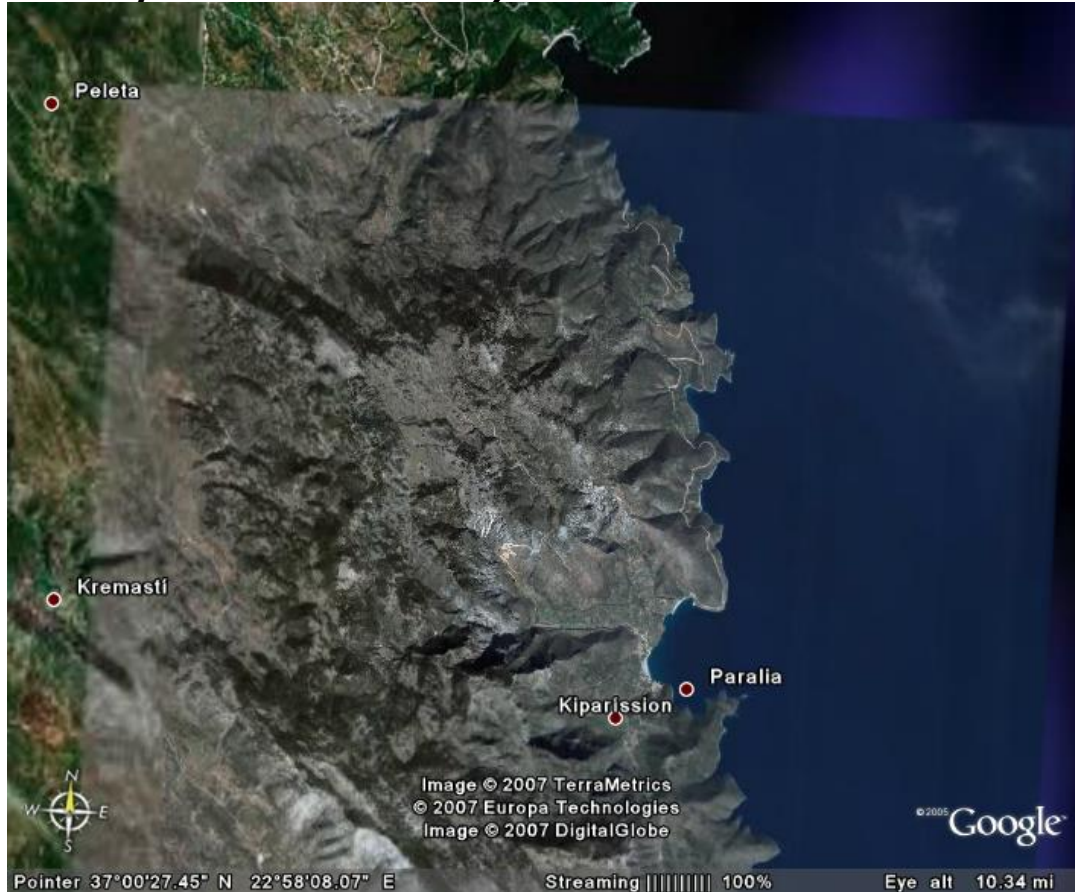
SYBILLA Ltd.  
Managing Environment, Safety & Risk

16 Ypsilandou, Maroussi GR 151 22 Athens, Greece  
Tel +30210-8024244 / Fax +30210-6141245  
e-mail : [mail@svbilla.gr](mailto:mail@svbilla.gr)

VAT No. EL 095487874



**Road Network Miloi-Kyveri-Astros-Tiros-Fokianos-Kyparisi (Fokianos-Kyparissi part),  
Environmental Impact Assessment Study**



<b>CONTRACTING ENTITY</b>	<b>REGIONAL GOVERNMENT OF PELOPONNISOS (COOPERATION WITH A.KARAGIANNIS)</b>
<b>CONTRACT PRICE</b>	<b>CONFIDENTIAL</b>
<b>YEAR</b>	<b>2003-2005</b>
<b>PROJECT TYPE</b>	<b>ENVIRONMENTAL IMPACT ASSESSMENT STUDY</b>
<b>LOCATION</b>	<b>ATHENS-PELOPONISSOS</b>





**SYBILLA Ltd.**  
*Managing Environment, Safety & Risk*

16 Ypsilandou, Maroussi GR 151 22 Athens, Greece  
 Tel +30210-8024244 / Fax +30210-6141245  
 e-mail : [mail@svbilla.gr](mailto:mail@svbilla.gr)

VAT No. EL 095487874



CERTIFIED M.S.  
 ISO 9001:2015  
 ISO 14001:2015

**"Cretan Northern Road Network Upgrade, Kalyves-Vryses Part" ENVIRONMENTAL IMPACT ASSESSMENT SCOPING-STUDY**

**ΔΟΡΥΦΟΡΙΚΗ ΦΩΤΟΓΡΑΦΙΑ**



**ΦΩΤΟΓΡΑΦΙΑ**



<b>CONTRACTING ENTITY</b>	<b>ΥΠΕΧΟΔΕ/CCDE/EΥΔΕ-ΒΟΑΚ</b>
<b>CONTRACT PRICE</b>	<b>CONFIDENTIAL</b>
<b>YEAR</b>	<b>2008-2009</b>
<b>PROJECT TYPE</b>	<b>ENVIRONMENTAL IMPACT ASSESSMENT SCOPING-STUDY</b>
<b>LOCATION</b>	<b>ATHENS-CHANIA</b>

**"Cretan Northern Road Network Upgrade, Kalyves-Vryses Part" Environmental Impact Assessment Study**



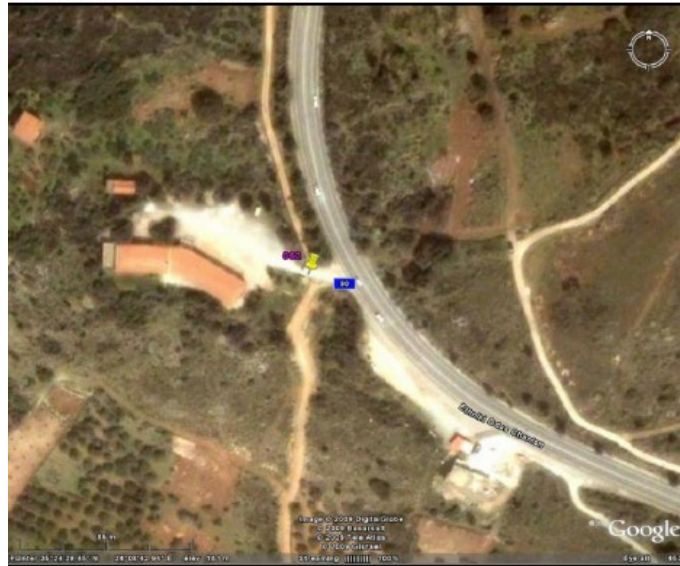
**SYBILLA Ltd.**  
*Managing Environment, Safety & Risk*

16 Ypsilandou, Maroussi GR 151 22 Athens, Greece  
Tel +30210-8024244 / Fax +30210-6141245  
e-mail : [mail@svbilla.gr](mailto:mail@svbilla.gr)

VAT No. EL 095487874



**ΔΟΡΥΦΟΡΙΚΗ ΦΩΤΟΓΡΑΦΙΑ**



**ΦΩΤΟΓΡΑΦΙΑ**



<b>CONTRACTING ENTITY</b>	<b>ΥΡΕΦΟΔΕ/CCDE/EYDE-BOAK</b>
<b>CONTRACT PRICE</b>	<b>CONFIDENTIAL</b>
<b>YEAR</b>	<b>2008-2009</b>
<b>PROJECT TYPE</b>	<b>ENVIRONMENTAL IMPACT ASSESSMENT SCOPING-STUDY</b>
<b>LOCATION</b>	<b>ATHENS-CHANIA</b>



SYBILLA Ltd.  
Managing Environment, Safety & Risk

16 Ypsilandou, Maroussi GR 151 22 Athens, Greece  
Tel +30210-8024244 / Fax +30210-6141245  
e-mail : [mail@svbilla.gr](mailto:mail@svbilla.gr)

VAT No. EL 095487874



**Environmental Impact Assessment Study for Egnatia Odos (Main road, vertical roads, local junctions etc.), ENVIRONMENTAL IMPACT ASSESSMENT SCOPING-STUDY for Xanthi Ring road in Vertical road 70 "Xanthi – Echinós – Greek Bulgarian border"**



CONTRACTING ENTITY	EGNATIA AE/I.K.PANAGOPOULOS
CONTRACT PRICE	CONFIDENTIAL
YEAR	2009-2010
PROJECT TYPE	ENVIRONMENTAL IMPACT ASSESSMENT SCOPING-STUDY
LOCATION	ATHENS - XANTHI



SYBILLA Ltd.  
Managing Environment, Safety & Risk

16 Ypsilandou, Maroussi GR 151 22 Athens, Greece  
Tel +30210-8024244 / Fax +30210-6141245  
e-mail : [mail@svbilla.gr](mailto:mail@svbilla.gr)

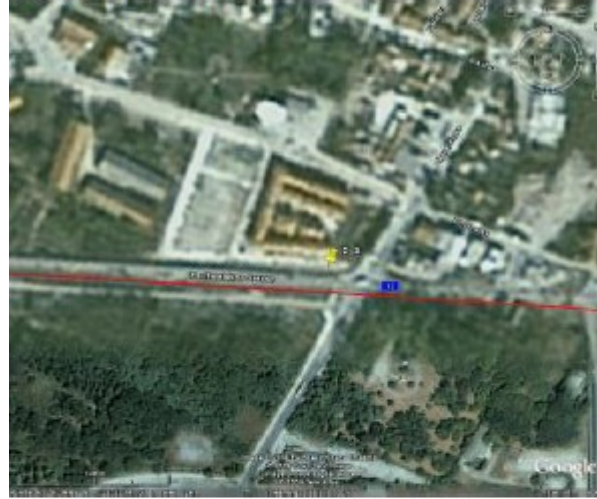
VAT No. EL 095487874



**Environmental Impact Assessment Study for Egnatia Odos (Main road, vertical roads, local junctions etc.), Section 61.1.1 Serres bypass road and the connection with vertical road 60 "Derveni-Serres-Promachonas" Environmental Impact Assessment Study**

ΘΕΣΗ : ΕΡΓΑΤΙΚΕΣ ΚΑΤΟΙΚΙΕΣ

ΔΟΡΥΦΟΡΙΚΗ ΦΩΤΟΓΡΑΦΙΑ



ΦΩΤΟΓΡΑΦΙΑ



CONTRACTING ENTITY	EGNATIA AE./I.K.PANAGOPOULOS
CONTRACT PRICE	CONFIDENTIAL
YEAR	2008-2010
PROJECT TYPE	ENVIRONMENTAL IMPACT ASSESSMENT STUDY
LOCATION	ATHENS - XANTHI





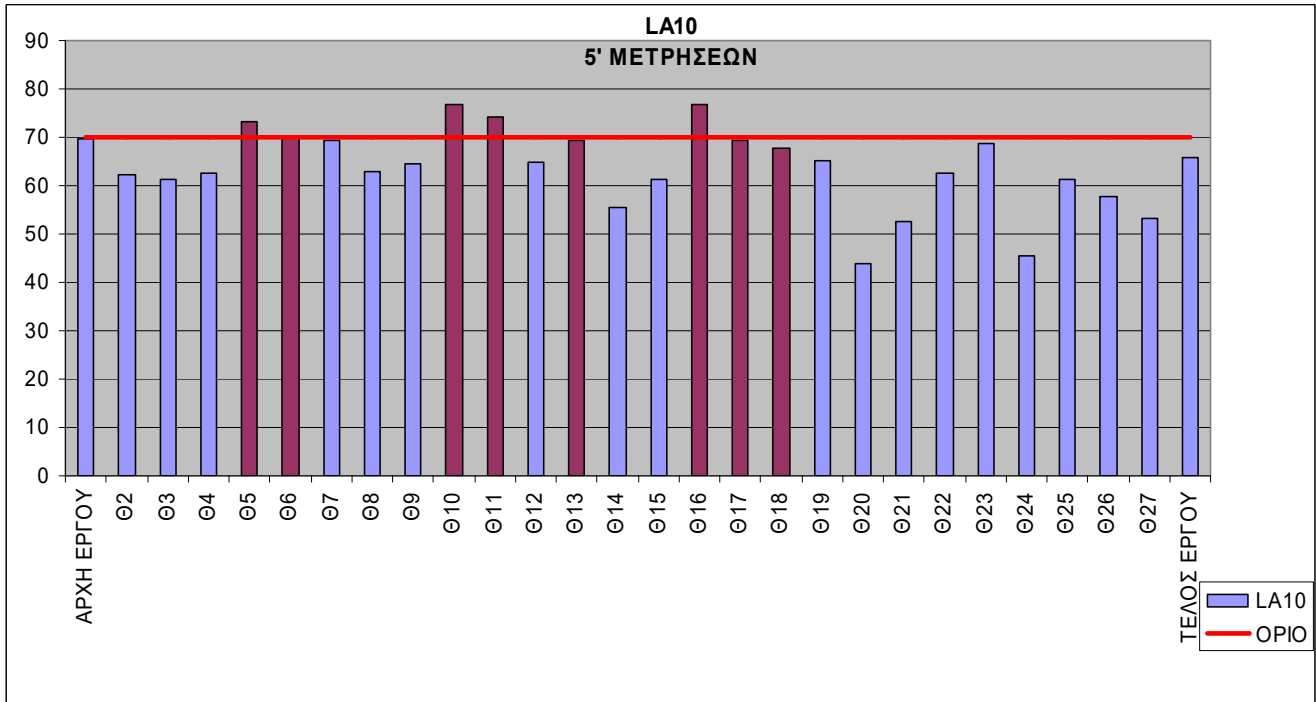
**SYBILLA Ltd.**  
*Managing Environment, Safety & Risk*

16 Ypsilandou, Maroussi GR 151 22 Athens, Greece  
 Tel +30210-8024244 / Fax +30210-6141245  
 e-mail : [mail@svbilla.gr](mailto:mail@svbilla.gr)

VAT No. EL 095487874



**Environmental Impact Assessment Study for Egnatia Odos (Main road, vertical roads, local junctions etc.), Folder for time extension of Government Gazette 40964/4.7.1996 80.3 "Mandra-Psathades", 80.4 "Didimotixo bypass", 80.5 "Didimotixo-Orestiada", 80.6 "Orestiada bypass, 80.7 "Orestiada-Kastanies", Vertical Road 80 "Ardanio-Ormenio"**



<b>CONTRACTING ENTITY</b>	<b>I.K.PANAGOPOULOS</b>
<b>CONTRACT PRICE</b>	<b>CONFIDENTIAL</b>
<b>YEAR</b>	<b>2008-2010</b>
<b>PROJECT TYPE</b>	<b>ENVIRONMENTAL IMPACT FOLDER</b>
<b>LOCATION</b>	<b>ATHENS - EVROS</b>





SYBILLA Ltd.  
Managing Environment, Safety & Risk

16 Ypsilandou, Maroussi GR 151 22 Athens, Greece  
Tel +30210-8024244 / Fax +30210-6141245  
e-mail : [mail@svbilla.gr](mailto:mail@svbilla.gr)

VAT No. EL 095487874



**Environmental Impact Assessment Study for Egnatia Odos (Main road, vertical roads, local junctions etc.), New routing part 80.6 "Orestiada bypass" of vertical road "Ardanio-Ormenio-Greek Bulgarian border" ENVIRONMENTAL IMPACT ASSESSMENT SCOPING-STUDY**

ΘΕΣΗ : ΒΟΡΕΙΟΣ ΚΟΜΒΟΣ ΟΡΕΣΤΙΑΔΑΣ

ΔΟΡΥΦΟΡΙΚΗ ΦΩΤΟΓΡΑΦΙΑ



ΦΩΤΟΓΡΑΦΙΑ



CONTRACTING ENTITY	EGNATIA AE./I.K.PANAGOPOULOS
CONTRACT PRICE	CONFIDENTIAL
YEAR	2009-2010
PROJECT TYPE	ENVIRONMENTAL IMPACT ASSESSMENT SCOPING-STUDY
LOCATION	ATHENS-EVROS



SYBILLA Ltd.  
Managing Environment, Safety & Risk

16 Ypsilandou, Maroussi GR 151 22 Athens, Greece  
Tel +30210-8024244 / Fax +30210-6141245  
e-mail : [mail@svbilla.gr](mailto:mail@svbilla.gr)

VAT No. EL 095487874



**Environmental Impact Assessment Study for Egnatia Odos (Main road, vertical roads, local junctions etc.), Part 61.1.1 for the Serres bypass road and the connection with the vertical road 60 "Derveni-Serres-Promachonas"**

ΘΕΣΗ : ΓΕΝΙΚΟ ΝΟΣΟΚΟΜΕΙΟ ΣΕΡΡΩΝ (ΠΕΡΙΑΣΤΙΚΗ)

ΔΟΥΡΥΦΟΡΙΚΗ ΦΩΤΟΓΡΑΦΙΑ



ΦΩΤΟΓΡΑΦΙΑ



CONTRACTING ENTITY	EGNATIA AE./ I.K.PANAGOPOULOS
CONTRACT PRICE	CONFIDENTIAL
YEAR	2009-2010
PROJECT TYPE	ENVIRONMENTAL IMPACT ASSESSMENT SCOPING-STUDY
LOCATION	ATHENS-SERRES



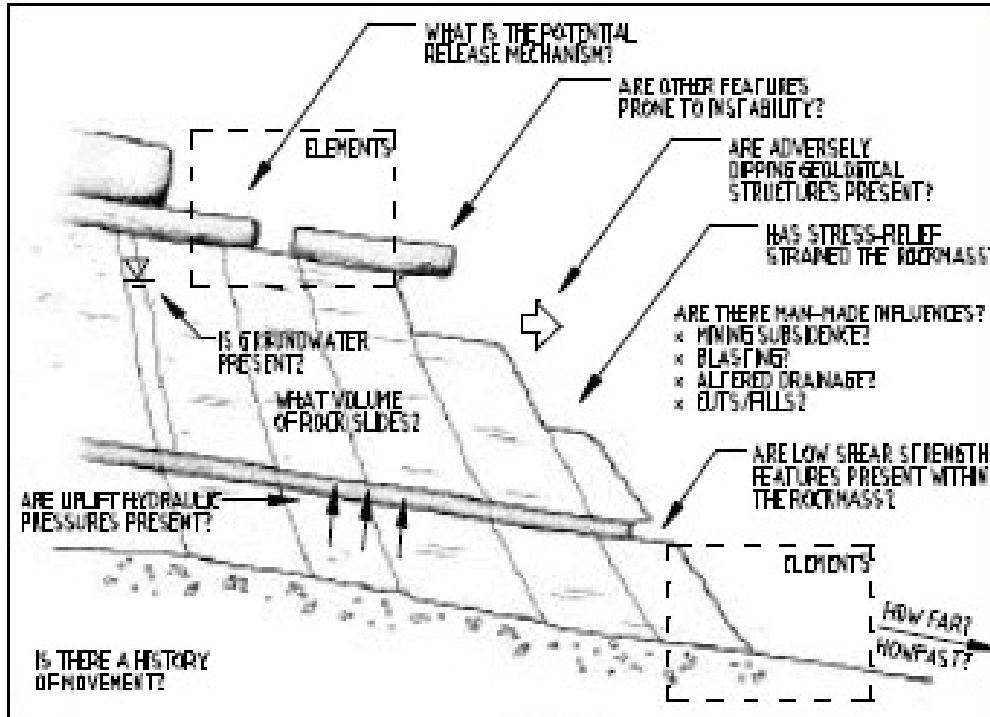
SYBILLA Ltd.  
Managing Environment, Safety & Risk

16 Ypsilandou, Maroussi GR 151 22 Athens, Greece  
Tel +30210-8024244 / Fax +30210-6141245  
e-mail : [mail@svbilla.gr](mailto:mail@svbilla.gr)

VAT No. EL 095487874



**Environmental Impact Assessment Study for Egnatia Odos (Main road, vertical roads, local junctions etc.), "Geotechnical problem solution in section Araxthos-Peristeri 3.4 in Egnatia Odos from X.Ø 7+150 to X.Ø 7+500, Environmental Impact Assessment Study**



CONTRACTING ENTITY	EGNATIA AE./I.K.PANAGOPOULOS
CONTRACT PRICE	CONFIDENTIAL
YEAR	2008-2010
PROJECT TYPE	FOLDER ISSUE
LOCATION	ATHENS-ARACHTHOS



SYBILLA Ltd.  
Managing Environment, Safety & Risk

16 Ypsilandou, Maroussi GR 151 22 Athens, Greece  
Tel +30210-8024244 / Fax +30210-6141245  
e-mail : [mail@svbilla.gr](mailto:mail@svbilla.gr)

VAT No. EL 095487874



CERTIFIED M.S.  
ISO 9001:2015  
ISO 14001:2015

**Environmental Impact Assessment Study for Egnatia Odos (Main road, vertical roads, local junctions etc.), "Western Inside Thessaloniki bypass road (Part 57.4) transport Upgrade" Environmental Impact Assessment Study**

ΠΙΝΑΚΑΣ 8.3.7-Π2: Περιοχές επιλεγμένων σημείων αποδεκτών, χαρακτηρισμός και αξιολόγηση επιπέδων θορύβου και προτεινόμενες θέσεις κατασκευής ηχοπετασμάτων

ΑΠΟΔΕΚΤΗΣ	ΜΕΤΡΗΣΕΙΣ	ΥΦΙΣΤΑΜΕΝΗ ΚΑΤΑΣΤΑΣΗ	1 <sup>ο</sup> ΕΤΟΣ - ΧΩΡΙΣ ΕΡΓΑ	2 <sup>ο</sup> ΕΤΟΣ - ΧΩΡΙΣ ΕΡΓΑ	1 <sup>ο</sup> ΕΤΟΣ - ΜΕ ΕΡΓΑ	2 <sup>ο</sup> ΕΤΟΣ - ΜΕ ΕΡΓΑ	ΧΡΗΣΕΙΣ ΓΗΣ	ΑΞΙΟΛΟΓΗΣΗ	ΣΥΓΚΡΙΤΙΚΗ ΑΞΙΟΛΟΓΗΣΗ ΜΕ ΚΑΙ ΧΩΡΙΣ ΕΡΓΑ	ΠΑΡΑΤΗΡΗΣΕΙΣ
	dB(A)	L10(18) dB(A)	L10(18) dB(A)	L10(18) dB(A)	L10(18) dB(A)	L10(18) dB(A)				
R1		65.9	66.0	67.7	67.3	69.0	ΑΜΙΓΧΗ ΚΑΤΟΙΚΙΑ	😊	😊	
R2		69.8	69.9	71.5	71.2	72.9	ΑΜΙΓΧΗ ΚΑΤΟΙΚΙΑ ΕΚΔΑΨΥΣΗ	😞	😞	ΗΧΟΠΕΤΑΣΜΑ
R3 (K1-1)	64.3	67.7	67.8	69.5	51.6	53.3	ΑΜΙΓΧΗ ΚΑΤΟΙΚΙΑ	😊	😊	
R4 (K1-4)	68.6	71.6	71.7	73.3	56.3	58.0	ΑΜΙΓΧΗ ΚΑΤΟΙΚΙΑ	😊	😊😊😊	
R5		68.4	68.4	70.1	69.8	71.5	ΑΜΙΓΧΗ ΚΑΤΟΙΚΙΑ	😞	😊	
R6 (K2-5)	65.3	72.9	72.9	74.6	76.4	78.1	ΧΩΡΟΣ ΠΡΑΣΙΝΟΥ	😞	😞	ΗΧΟΠΕΤΑΣΜΑ
R7 (K2-3)	71.5	72.1	72.2	73.8	75.9	77.6	ΓΕΝΙΚΗ ΚΑΤΟΙΚΙΑ	😞	😞	ΗΧΟΠΕΤΑΣΜΑ
R8		68.5	68.6	70.3	73.2	74.9	ΓΕΝΙΚΗ ΚΑΤΟΙΚΙΑ	😞	😞😞😞	ΗΧΟΠΕΤΑΣΜΑ
R9		72.3	72.4	74.0	73.7	75.4	ΑΜΙΓΧΗ ΚΑΤΟΙΚΙΑ	😞	😞	ΗΧΟΠΕΤΑΣΜΑ
R10 (K2-7)	67.8	72.7	72.8	74.5	74.1	75.8	ΑΜΙΓΧΗ ΚΑΤΟΙΚΙΑ	😞	😞	ΗΧΟΠΕΤΑΣΜΑ
R11		75.2	75.3	77.0	76.6	78.3	ΑΜΙΓΧΗ ΚΑΤΟΙΚΙΑ	😞	😊	ΗΧΟΠΕΤΑΣΜΑ
R12		68.1	68.2	69.9	69.5	71.2	ΑΜΙΓΧΗ ΚΑΤΟΙΚΙΑ	😞	😞	ΗΧΟΠΕΤΑΣΜΑ
R13		74.1	74.1	75.8	61.6	63.4	ΑΜΙΓΧΗ ΚΑΤΟΙΚΙΑ	😊	😊😊😊	
R14 (K3-1)	68.9	71.5	71.6	73.3	56.7	58.4	ΓΕΝΙΚΗ ΚΑΤΟΙΚΙΑ	😊	😊😊😊	
R15		70.6	70.7	72.4	52.9	54.6	ΓΕΝΙΚΗ ΚΑΤΟΙΚΙΑ	😊	😊😊😊	
R16 (K3-4)	68.2	67.5	67.6	69.3	49.4	51.0	ΓΕΝΙΚΗ ΚΑΤΟΙΚΙΑ	😊	😊😊😊	
R17		70.2	70.3	72.0	56.2	56.9	ΓΕΝΙΚΗ ΚΑΤΟΙΚΙΑ	😊	😊😊😊	
R18		66.9	67.0	68.6	56.8	57.5	ΓΕΝΙΚΗ ΚΑΤΟΙΚΙΑ	😊	😊😊😊	

<b>CONTRACTING ENTITY</b>	<b>EGNATIA AE/I.K.PANAGOPOULOS</b>
<b>CONTRACT PRICE</b>	<b>CONFIDENTIAL</b>
<b>YEAR</b>	<b>2011-2012</b>
<b>PROJECT TYPE</b>	<b>DATA FOLDER-ENVIRONMENTAL IMPACT ASSESSMENT STUDY</b>
<b>LOCATION</b>	<b>ATHENS-THESSALONIKI</b>



SYBILLA Ltd.  
Managing Environment, Safety & Risk

16 Ypsilandou, Maroussi GR 151 22 Athens, Greece  
Tel +30210-8024244 / Fax +30210-6141245  
e-mail : [mail@svbilla.gr](mailto:mail@svbilla.gr)

VAT No. EL 095487874



**Environmental Impact Assessment Study for Egnatia Odos (Main road, vertical roads, local junctions etc.), "Serres bypass road (Section 61.1.1) and vertical road 60 Derveni – Serres – Promachonas" and National Highway Serres-Drama-Kavala"**  
**ENVIRONMENTAL IMPACT ASSESSMENT SCOPING-STUDY and Study**

ΘΕΣΗ : ΓΕΝΙΚΟ ΝΟΣΟΚΟΜΕΙΟ ΣΕΡΡΩΝ (Μ. ΑΛΕΞΑΝΔΡΟΥ)

ΔΡΟΥΦΟΡΙΚΗ ΦΩΤΟΓΡΑΦΙΑ



ΦΩΤΟΓΡΑΦΙΑ



CONTRACTING ENTITY	EGNATIA AE./I.K.PANAGOPOULOS
CONTRACT PRICE	CONFIDENTIAL
YEAR	2008-2011
PROJECT TYPE	FOLDER ISSUE
LOCATION	ATHENS-SERRES





**SYBILLA Ltd.**  
*Managing Environment, Safety & Risk*

16 Ypsilandou, Maroussi GR 151 22 Athens, Greece  
 Tel +30210-8024244 / Fax +30210-6141245  
 e-mail : [mail@svbilla.gr](mailto:mail@svbilla.gr)

VAT No. EL 095487874



CERTIFIED M.S.  
 ISO 9001:2015  
 ISO 14001:2015

***"Road Junctions in the western entrance of Thessaloniki." Extension-Modernization-Renewal of Environmental Requirements of the interconnecting road between the industrial area of Thessaloniki and the National Highway of Thessaloniki-Katerini from the Sindos interchange to the junction with the National Highway Thessaloniki – Edessa. Various Studies***



<b>CONTRACTING ENTITY</b>	<b>CENTRAL MACEDONIA DE-CENTRALISED GOVERNMENT</b>
<b>CONTRACT PRICE</b>	<b>CONFIDENTIAL</b>
<b>YEAR</b>	<b>2011-2012</b>
<b>PROJECT TYPE</b>	<b>ENVIRONMENTAL PERMIT MODIFICATION</b>
<b>LOCATION</b>	<b>ATHENS-THESSALONIKI</b>



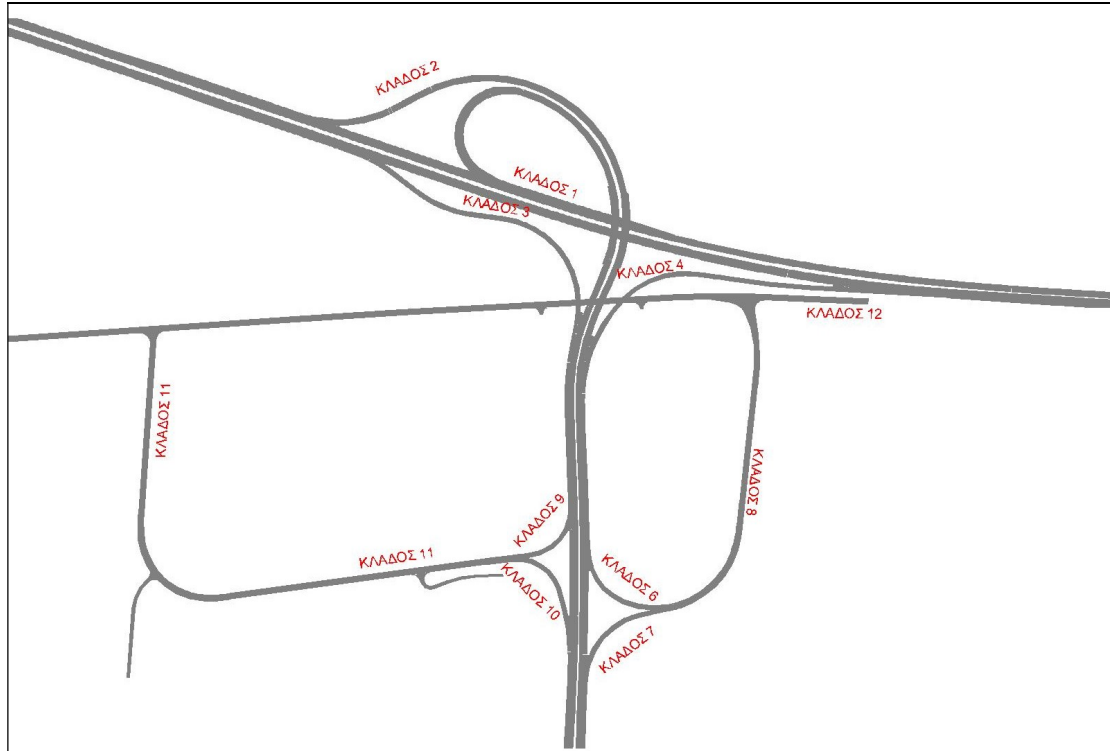
SYBILLA Ltd.  
Managing Environment, Safety & Risk

16 Ypsilandou, Maroussi GR 151 22 Athens, Greece  
Tel +30210-8024244 / Fax +30210-6141245  
e-mail : [mail@svbilla.gr](mailto:mail@svbilla.gr)

VAT No. EL 095487874



**"Road Junctions in the western entrance of Thessaloniki.", Interconnecting road between the industrial area of Thessaloniki and the National Highway of Thessaloniki-Katerini from the Sindos interchange to the junction with the National Highway Thessaloniki-Edessa**



CONTRACTING ENTITY	CENTRAL MACEDONIA DE-CENTRALIZED GOVERNMENT
CONTRACT PRICE	CONFIDENTIAL
YEAR	2011-2013
PROJECT TYPE	ENVIRONMENTAL IMPACT ASSESSMENT STUDY
LOCATION	ATHENS-THESSALONIKI



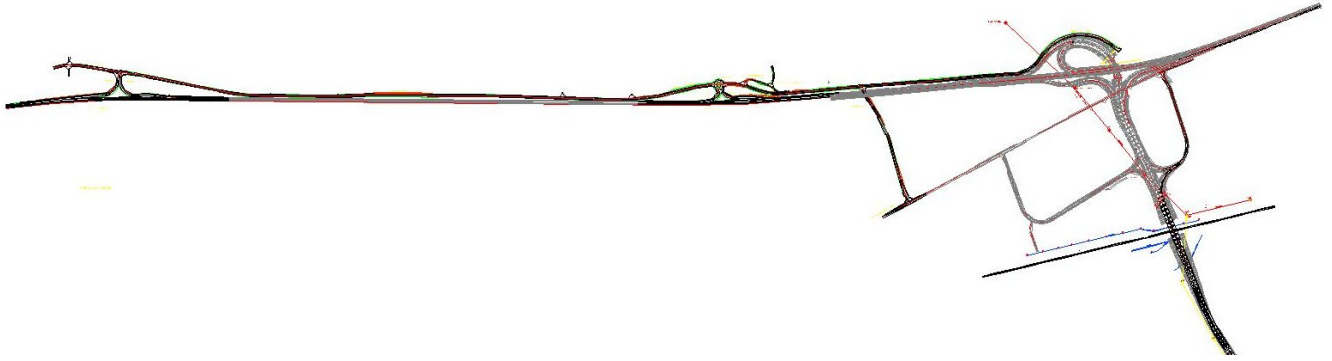
**SYBILLA Ltd.**  
*Managing Environment, Safety & Risk*

16 Ypsilandou, Maroussi GR 151 22 Athens, Greece  
Tel +30210-8024244 / Fax +30210-6141245  
e-mail : [mail@sybilla.gr](mailto:mail@sybilla.gr)

VAT No. EL 095487874



***"Road Junctions in the western entrance of Thessaloniki.", Right Side Road of National Highway Thessaloniki-Edessa from Ag. Athanasios junctions to the Ano Diavasi of Ag. Athanasios bridge, Environmental Impact Assessment Study***



<b>CONTRACTING ENTITY</b>	<b>CENTRAL MACEDONIA DE-CENTRALIZED GOVERNMENT</b>
<b>CONTRACT PRICE</b>	<b>CONFIDENTIAL</b>
<b>YEAR</b>	<b>2011-2013</b>
<b>PROJECT TYPE</b>	<b>ENVIRONMENTAL IMPACT ASSESSMENT STUDY</b>
<b>LOCATION</b>	<b>ATHENS-THESSALONIKI</b>



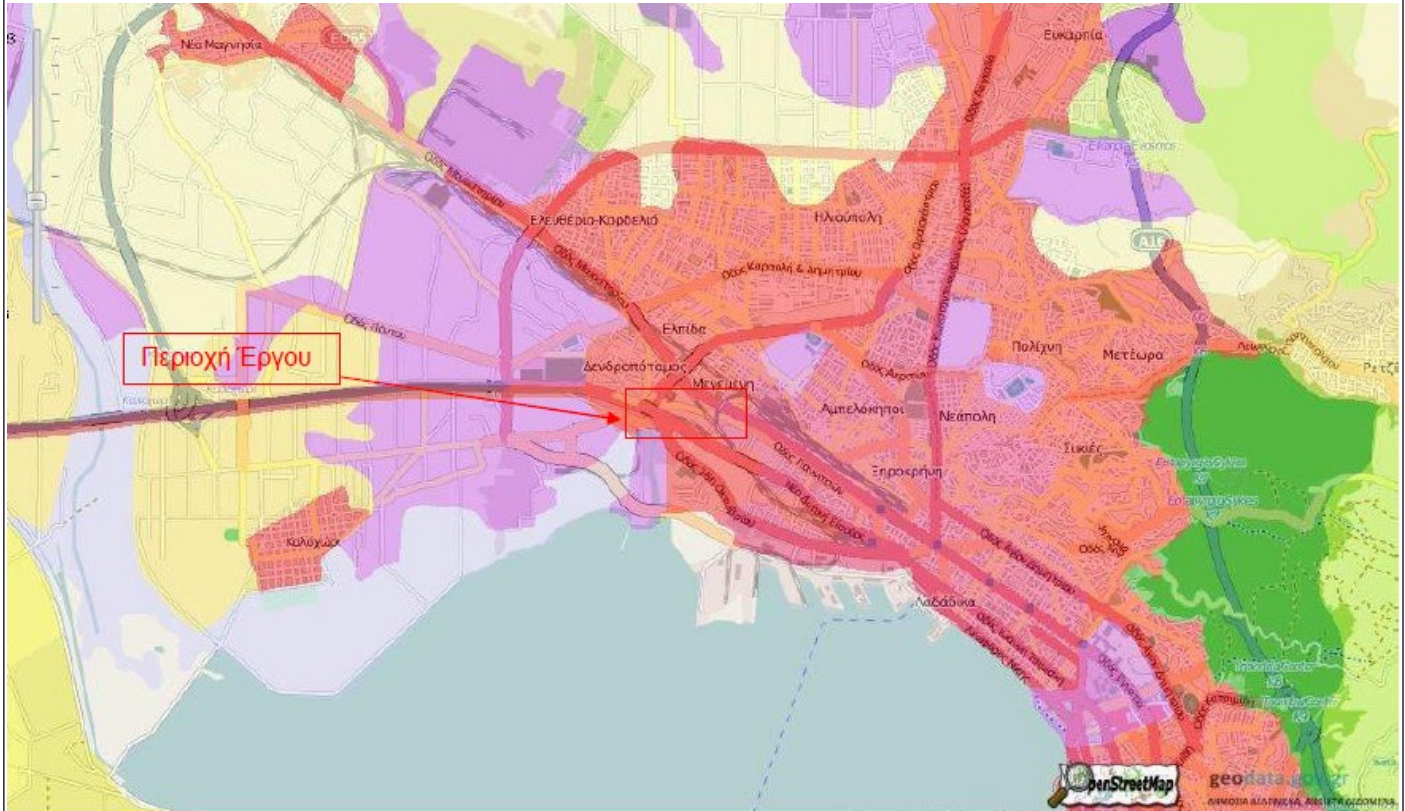
**SYBILLA Ltd.**  
*Managing Environment, Safety & Risk*

16 Ypsilandou, Maroussi GR 151 22 Athens, Greece  
 Tel +30210-8024244 / Fax +30210-6141245  
 e-mail : [mail@svbilla.gr](mailto:mail@svbilla.gr)



**TUV**  
**AUSTRIA**  
 CERTIFIED M.S.  
 ISO 9001:2015  
 ISO 14001:2015

**"Road Junctions in the western entrance of Thessaloniki.", Environmental Impact Assessment Study for the interconnection of the Intercity Bus Station KTEL and Giannitson Road**



<b>CONTRACTING ENTITY</b>	<b>CENTRAL MACEDONIA DE-CENTRALIZED GOVERNMENT</b>
<b>CONTRACT PRICE</b>	<b>CONFIDENTIAL</b>
<b>YEAR</b>	<b>2011-2012</b>
<b>PROJECT TYPE</b>	<b>ENVIRONMENTAL IMPACT ASSESSMENT STUDY</b>
<b>LOCATION</b>	<b>ATHENS-THESSALONIKI</b>





SYBILLA Ltd.  
Managing Environment, Safety & Risk

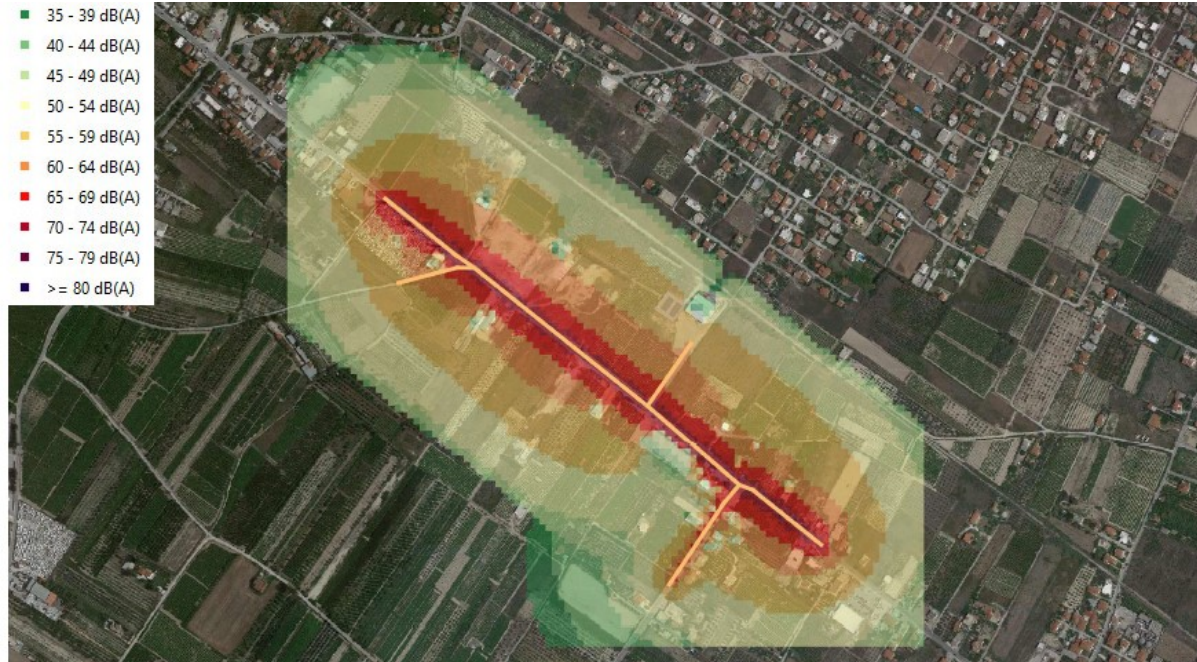
16 Ypsilandou, Maroussi GR 151 22 Athens, Greece  
Tel +30210-8024244 / Fax +30210-6141245  
e-mail : [mail@sybilla.gr](mailto:mail@sybilla.gr)

VAT No. EL 095487874



## Environmental Impact Assessment Study of two road crossings in Velos county

Υφιστάμενη Κατάσταση. Ισοθροβικές Καμπύλες Μοντέλου Εκτίμησης Παραμέτρων Θορύβου.  $L_{day}$



CONTRACTING AUTHORITY	COUNTY OF VELOS-VOCHA./I.K.PANAGOPOULOS/SYBILLA LTD
CONTRACT AMOUNT	CONFIDENTIAL
YEAR	2019-2020
PROJECT TYPE	ENVIRONMENTAL IMPACT ASSESSMENT STUDY
LOCATION	ATHENS-KORINTHIA